

MILITARY SURFACE DEPLOYMENT AND DISTRIBUTION COMMAND

SDDDC

FACT BOOK

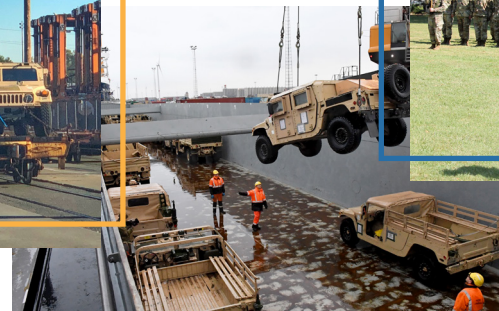
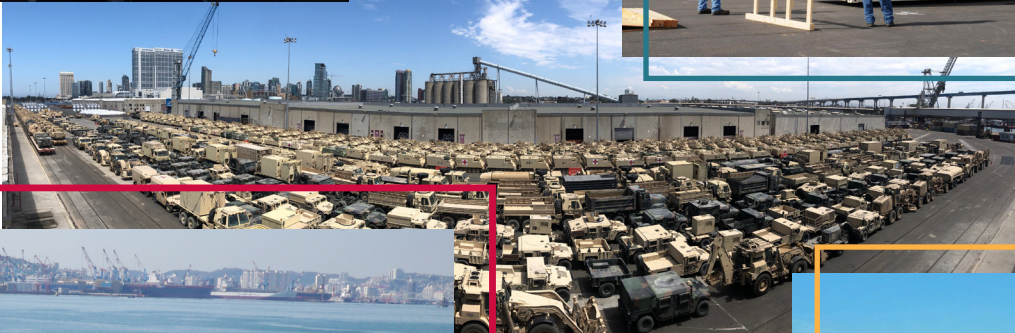
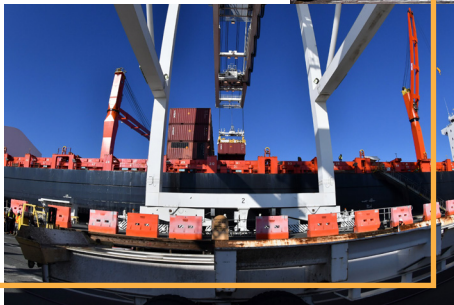


U.S. ARMY



INDEX

- 2 – SDDC Overview
- 4 – 595th Transportation Brigade
- 5 – 596th Transportation Brigade
- 6 – 597th Transportation Brigade
- 7 – 598th Transportation Brigade
- 8 – 599th Transportation Brigade
- 9 – Transportation Engineering Agency
- 10 – Deployment Support Command
- 12 – SDDC's Global Presence
- 14 – Military Ocean Terminal Sunny Point
- 15 – Military Ocean Terminal Concord
- 16 – A Brief History of SDDC
- 20 – SDDC's People
- 21 – SDDC's Fourth Component
- 22 – SDDC's Higher Headquarters
- 24 – SDDC Heraldry



The Military Surface Deployment and Distribution Command (SDDC) provides integrated and synchronized Global Deployment and Distribution capabilities to the point of need, delivering innovative transportation solutions to the right place at the right time, every time. Whenever and wherever Soldiers, sailors, airmen, Marines and Coast Guardsmen are deployed, SDDC is involved in planning and executing the surface delivery of their equipment and supplies.

As both the Army Service Component Command to US Transportation Command and a Major Subordinate Command to US Army Materiel Command, SDDC connects and synchronizes surface warfighting requirements through distribution network nodes to the point of need, responsively projecting power and delivering desired effects in support of combatant commands and the Total Joint Force. The command also partners with the commercial transportation industry as the coordinating link between DOD surface transportation requirements and the capability industry provides.

With nine total force brigades geographically located throughout the world to support Combatant Commanders, SDDC is globally postured to deliver readiness to the Joint Warfighter.

SDDC's Transportation Engineering Agency provides the Department of Defense with engineering, policy guidance, research, and analytical expertise ensuring US military forces can respond successfully to any requirement anywhere in the world.

SDDC's US Army Reserve force, the Deployment Support Command, provides SDDC with an integrated Total Force capability.



SDDC HEADQUARTERS

SDDC is headquartered at Scott Air Force Base, Illinois, approximately 30 minutes east of St. Louis, Missouri. The command is collocated with, and shares a building with, the US Transportation Command. The headquarters consists of the Command Group, a Headquarters and Headquarters Detachment, G-Staff Directorates and numerous Special Staff Offices.

ACTIVE COMPONENT TRANSPORTATION BRIGADES

SDDC's active duty force is manned, equipped and trained, and geographically positioned to ensure warfighting readiness. They provide surface mobility options to ensure strategic readiness, instill confidence in our Allies and mission partners, deter our enemies, and support warfighting requirements to the point of need. With five active-duty transportation brigades and their subordinate battalions located throughout Europe, Asia, the Pacific and the continental United States, these units do not need to deploy to support Combatant Commanders because they are already there, ready to deliver readiness to the warfighter.



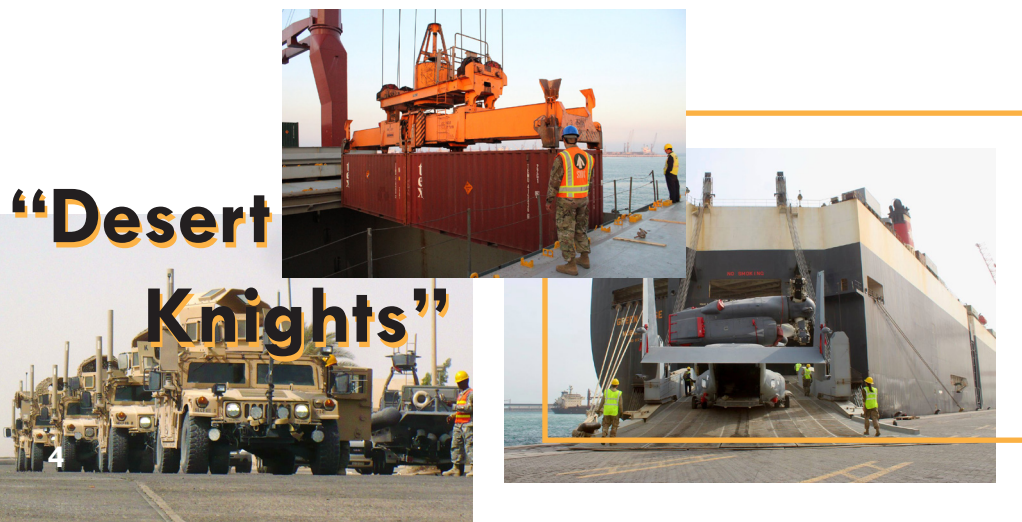
Transportation Brigade

Camp Arifjan, Kuwait

The 595th Transportation Brigade, Camp Arifjan, Kuwait, conducts surface deployment and distribution operations to meet national security objectives within the U.S. Central Command (CENTCOM) area of responsibility.

Through a cohesive team of experts, the 595th Transportation Brigade links strategic Warfighter surface-movement requirements with commercial capability. Combining organic, commercial and host-nation capabilities, the brigade offers maximum options and solutions to supported forces while delivering equipment and sustainment on time.

The brigade has two battalions: the 831st Transportation Battalion, Manama, Bahrain; and the 840th Transportation Battalion, Port of Ash Shuaiba, Kuwait.



Transportation Brigade

Southport, North Carolina

The 596th Transportation Brigade, Military Ocean Terminal Sunny Point (MOTSU), North Carolina, safely provides ammunition terminal services to meet the nation's objectives. This responsibility includes the operation of both East and West Coast ammunition terminals at MOTSU and at Military Ocean Terminal Concord (MOTCO), California, respectively. The brigade also has responsibility for supporting the western half of the U.S. Northern Command (NORTHCOM) area of responsibility.

The brigade has two battalions: the 833rd Transportation Battalion, Joint Base Lewis-McChord, Washington; and the 834th Transportation Battalion, Concord, California.





Transportation Brigade

Fort Eustis, Virginia

The 597th Transportation Brigade, Joint Base Langley-Eustis, Virginia, is focused on the eastern half of the NORTHCOM and the U.S. Southern Command areas of responsibility. The 597th and its subordinate units are responsible for meeting the surface deployment, redeployment and distribution needs of the Warfighter and Defense Transportation System customers in the United States.

The brigade has three battalions and three rapid port-opening elements: the 832nd Transportation Battalion, Joint Base Langley-Eustis; the 841st Transportation Battalion, Charleston, South Carolina; the 842nd Transportation Battalion, Beaumont, Texas; and the 688th, 689th and 690th Rapid Port Opening Elements, Joint Base Langley-Eustis.



“Rapid Support”



Transportation Brigade

Sembach, Germany

The 598th Transportation Brigade, Sembach Kaserne, Germany, supports U.S. European Command (EUCOM), U.S. Africa Command (AFRICOM) and CENTCOM via the Northern Distribution Network. The brigade enables full-spectrum operations by performing movement of forces and materiel in support of Combatant Commanders. This unit has left its mark in dozens of countries, distinguishing itself in every mission, aptly fulfilling its motto, “Warrior Logistics – in Motion.” The brigade provides expeditionary and deliberate port and surface distribution operations in EUCOM and AFRICOM, and sustains forces. Additionally, the unit is prepared to deploy globally on short notice to conduct port and distribution operations.

The brigade has two battalions and one company: the 838th Transportation Battalion, Kaiserslautern, Germany; the 839th Transportation Battalion, Livorno, Italy; and the 950th Transportation Company, Bremerhaven, Germany.

“Warrior Logistics -

In Motion!”



Transportation Engineering Agency

Scott AFB, Illinois

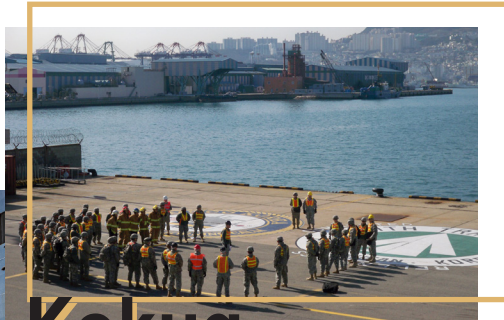


Transportation Brigade

Wheeler AAF, Hawaii

The 599th Transportation Brigade, Wheeler Army Airfield, Hawaii, is located with all U.S. Indo-Pacific Command service component commands on the island, making the location ideal for brigade members to effectively plan and coordinate with leading supported units. The unit's location also allows easy access to Honolulu's commercial ports, Kalaeloa Barbers Point Harbor and to the Navy port at Pearl Harbor. The area of responsibility for the 599th is geographically the largest in the world, covering 52 percent of the earth's surface, equal to about 105 million square miles.

The brigade has three battalions and one Naval Reserve unit: the 835th Transportation Battalion, Okinawa, Japan; the 836th Transportation Battalion, Yokohama, Japan; the 837th Transportation Battalion, Busan, Korea; and Naval Reserve SDDC-Pacific, Alameda, California.



**"Koa Kokua -
Warrior Support!"**



The Transportation Engineering Agency, Scott Air Force Base, Illinois, provides the Department of Defense with expert transportation engineering, policy guidance, research and analysis. As a subordinate organization within SDDC, TEA also functions as part of the USTRANSCOM Joint Distribution Process Analysis Center (JDPAC) and is made up of analysts, engineers, transportation specialists, and others who all work together to execute the mission. TEA encompasses everything from the Programs for National Defense to deployability of national forces.



Deployment Support Command

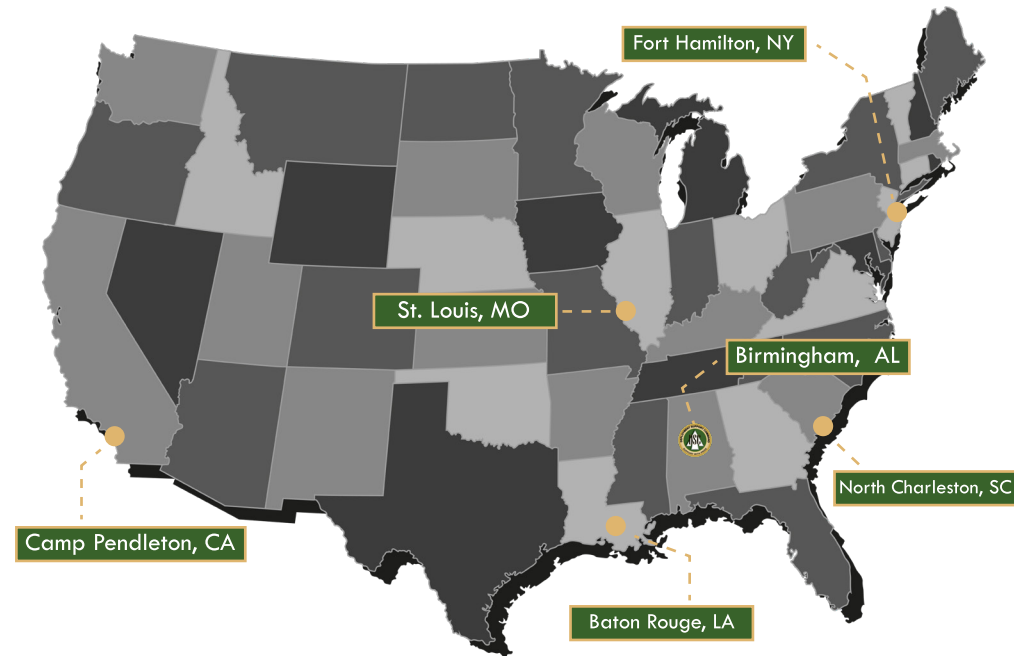
Birmingham, Alabama



SDDC's U.S. Army Reserve force, the Deployment Support Command, provides SDDC with an integrated Total Force capability that is critical to sustaining our readiness. Half our strength and power resides in the DSC, and the integration of SDDC's active and Reserve components is a primary capability that enables our mission readiness.

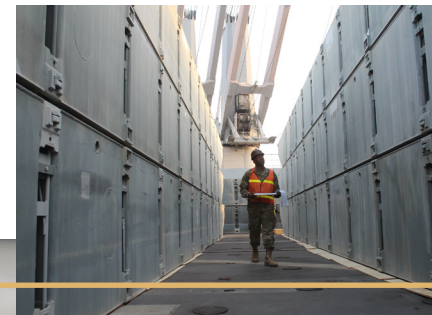
The DSC brings significant capability to the fight and supports SDDC operations by providing four Reserve transportation brigades and an Expeditionary Rail Center. Operationally controlled by SDDC and headquartered in Birmingham, Alabama, the DSC is a direct-reporting command of the 377th Theater Support Command, located in Belle Chasse, Louisiana.

By consolidating all Army Reserve surface mobility units under a single organization and providing mission command, technical training and readiness oversight, the Surface Warriors of DSC are key enablers for SDDC.



DSC BRIGADES

1179th Transportation Brigade – Fort Hamilton, NY
1189th Transportation Brigade – North Charleston, SC
1190th Transportation Brigade – Baton Rouge, LA
1394th Transportation Brigade – Camp Pendleton, CA
757th Expeditionary Rail Center – St. Louis, MO



SDDC'S GLOBAL PRESENCE

"Desert Knights"
595th
USCENTCOM
Camp Arifjan, Kuwait

"Ironclad...Delivering Firepower"
596th
USNORTHCOM
Southport, NC

"Rapid Support!"
597th
USNORTHCOM / USSOUTHCOM
Joint Base Langley-Eustis, VA

"Warrior Logistics - In Motion!"
598th
USEUCOM / USAFRICOM
Sembach, Germany

"Koa Kokua - Warrior Support"
599th
USINDOPACOM
Schofield Barracks, HI

"Support with Pride"
DSC
US ARMY RESERVE
Birmingham, AL



SURFACE WARRIORS

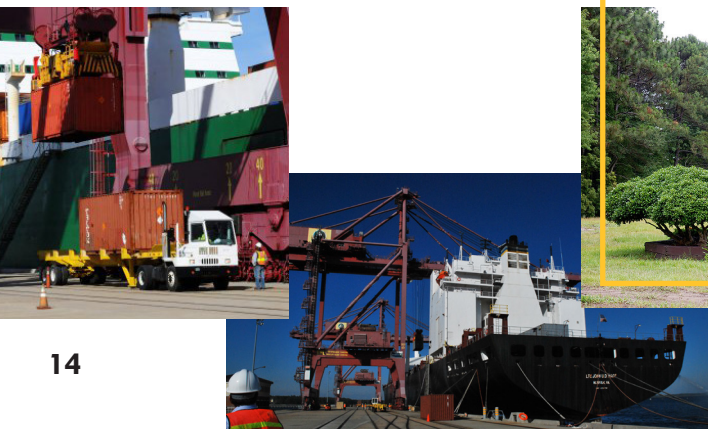
Military Ocean Terminal Sunny Point (MOTSU), located in Sunny Point, North Carolina, is SDDC's East Coast strategic ammunition port, and is DOD's primary ammunition seaport supporting the European, African and Middle Eastern areas of operation.

Activated in 1955, MOTSU is located on the west bank of the Cape Fear River in Brunswick County, North Carolina. Encompassing more than 16,000 acres, MOTSU is home to the 596th Transportation Brigade. The port has transferred munitions to every major armed conflict since it was established.

As a key ammunition shipping point on the Atlantic coast, MOTSU stores and ships DOD ammunition; dangerous cargo and explosives, including small arms ammunition; artillery shells, fuses and propellants; ammunition for vehicle systems; and aircraft bombs and ammunition.

MOTSU is the largest ammunition port in the nation. With a workforce of approximately 350 civilians, contractors and military personnel, the installation includes three wharves and incorporates a network of railroad tracks to move munitions across the area. This infrastructure allows the seamless transfer of munitions between rail, trucks and ships.

MOTSU enables the U.S. Army to meet its wartime ammunition throughput requirements.



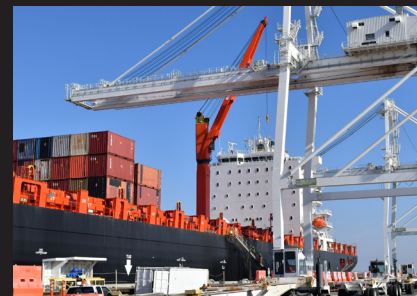
Military Ocean Terminal Concord (MOTCO) is SDDC's West Coast strategic ammunition port. MOTCO is the DOD's primary ammunition seaport supporting the Indo-Pacific area of operation.

The Army's presence at MOTCO dates back to 1997 when the Army's 1302nd Major Port Command was relocated from Oakland Army Base, California, to MOTCO and became the 834th Transportation Battalion. MOTCO properties were transferred from the Navy to the Army in 2008 per the 2005 Base Realignment and Closure Commission recommendations.

The 834th Transportation Battalion is the port manager at MOTCO and operates the three piers and an Army-owned rail system that connects with major public railway lines.

MOTCO receives ammunition by rail and highway; stages containers, railcars and trailers; and loads vessels with containers and break-bulk (loose items) ammunition. Rail lines, piers, holding pads, transfer facilities, staging areas, railcar class yards, barricaded railcar holding areas and Main Supply Routes are all operated in support of cargo receipt and movement.

MOTCO encompasses approximately 115 acres inland, 6,500 acres of tidal area which includes terminal piers, staging and transfer facilities, and 2,000 acres of offshore islands. While ammunition is the focus of most cargo movement into or out of MOTCO, the installation is capable of handling general cargo providing it is in conjunction with, or does not interfere with, ammunition transshipment.



A Brief History of SDDC



Jul 1966
The U.S. Army Transportation Engineering Agency
(TEA) JOINED MTMTS.



1965

Feb 1965
THE MILITARY TRAFFIC MANAGEMENT AND TERMINAL SERVICE (MTMTS) was established as a jointly staffed major Army command.

Jun 1965
DOD MADE MTMTS THE SINGLE MANAGER of military traffic, land transportation, and common user ocean terminals in the CONUS.

1966



1973

1965-1973
During the Vietnam War, MTMTS **DEPLOYED 2.6 MILLION DOD PASSENGERS AND 76 MILLION** measurement tons from CONUS to the Pacific.

Oct 1988
MTMC BECAME A COMPONENT OF U.S. TRANSPORTATION COMMAND.



Oct 2002-May 2003
MTMC DEPLOYED 4.4 MILLION MEASUREMENT tons on 190 ships to Kuwait for Operation Iraqi Freedom.



1974

Jul 1974
MTMTS WAS RENAMED Military Traffic Management Command (MTMC) to highlight its port management role and the reduced role of terminals.

1988



1990

1990-1991
MTMC DEPLOYED 6.6 MILLION MEASUREMENT TONS ON 564 SHIPS to Saudi Arabia to support Operations Desert Shield/Storm.

2002

2003

2003-2004
USTRANSCOM NAMED MTMC the manager of DOD surface transportation.

Jan 2004

MTMC WAS RENAMED

Military Surface Deployment and Distribution Command (SDDC) to reflect its enlarged role in “end-to-end” surface transportation.

2004



Jun 2005

The Navy's Defense Transportation and Tracking System **(DTTS) TRANSFERRED TO SDDC.**

2005

Oct 2006

SDDC BECAME A MAJOR SUBORDINATE COMMAND of U.S. Army Materiel Command while retaining its operational ties with USTRANSCOM.

2006



Jul-Sep 2007

HEADQUARTERS SDDC AND THE TEA RELOCATED

from Virginia to a temporary building at Scott Air Force Base, Illinois as the first step toward a single command headquarters.

2007

Feb 2008

THE U.S. ARMY RESERVE ACTIVATED

the Reserve Deployment Support Command (DSC) to standardize the training of SDDC reservists.

2008

2014-2015

SDDC BEGAN SUPPORT OF OPERATIONS INHERENT RESOLVE

in Iraq, Atlantic Resolve in Europe, and Freedom's Sentinel in Afghanistan.



2020

SDDC PROVIDED SUPPORT TO OPERATION WARP SPEED,

the US response to the global COVID-19 pandemic.

2014

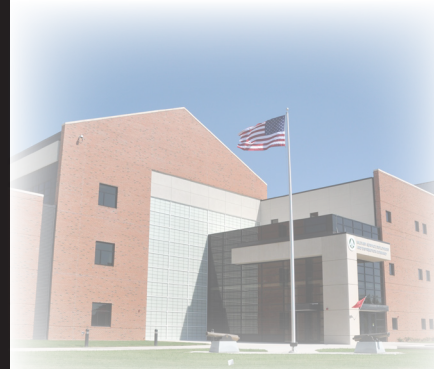
2017

2020

Jun-Oct 2010

HEADQUARTERS SDDC AND TEA RELOCATED

to Building 1900W at Scott Air Force Base, Ill. Personnel from the recently closed Operations Center at Fort Eustis, VA joined them as the command formed a single headquarters.



Oct 2017

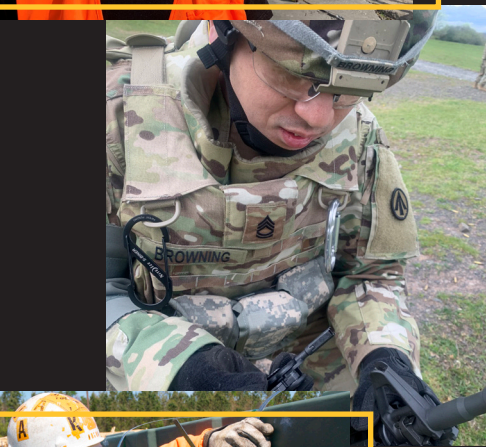
AFTER 52 YEARS, SDDC TRANSFERRED

its DOD-wide Personal Property mission to USTRANSCOM.



SDDC's PEOPLE

Our Strategic Advantage



Around the globe, SDDC performs operations supporting the warfighter with a Total Force made up of trusted professionals from the active-duty and Reserve components, government civilians, contractors and local national employees, and our fourth component, commercial industry partners.

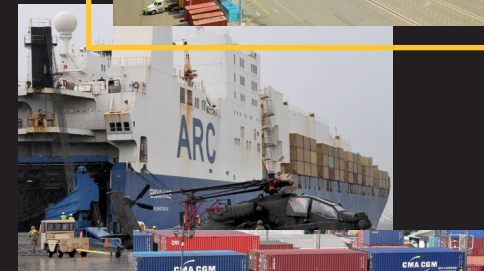
The professional, skilled and extremely dedicated Surface Warriors who make up SDDC's Total Force team, and the diverse capabilities they bring to our mission, provide the command with a strategic advantage that cannot be matched.



THE FOURTH COMPONENT

SDDC's Commercial Partners

SDDC's fourth component, our commercial carriers and industry partners, perform an indispensable role in SDDC's success. Commercial carriers and partners contribute approximately 88% of continental U.S. land transport and 80% of global sealift for USTRANSCOM's global mobility capability. They provide expertise, capability and professionalism, and their continued support, coordination and synchronization is vital to our ability to deliver readiness in support of our Nation's objectives. They are more than just partners, they are critical members of the SDDC team.



SDDC'S HIGHER HEADQUARTERS

U.S. Transportation Command

Scott AFB, Illinois



SDDC is the Army Service Component Command to the U.S. Transportation Command. USTRANSCOM exists as a warfighting combatant command to project and sustain military power at a time and place of the nation's choosing. Powered by dedicated men and women, USTRANSCOM underwrites the lethality of the Joint Force, advances American interests around the globe, and provides our nation's leaders with strategic flexibility to select from multiple options, while creating multiple dilemmas for our adversaries.

U.S. Army Materiel Command

Redstone Arsenal, Alabama



SDDC is a Major Subordinate Command to the U.S. Army Materiel Command. AMC develops and delivers materiel readiness solutions to ensure globally dominant land force capabilities. Headquartered at Redstone Arsenal, Alabama, AMC is one of four Army Commands. AMC synchronizes and integrates the Army's total capabilities in support of the Chief of Staff of the Army's priorities and Combatant Command requirements. As the Army's Lead Materiel Integrator, AMC manages the global supply chain, synchronizing logistics and sustainment activities across the Army.

SDDC HERALDRY



SDDC's organizational name may have changed over the years, but the command's shield with a white arrow against a green background has been an enduring symbol of its mission.

According to the Army Institute of Heraldry:

- The green disc represents the 'Go' signal used for traffic control of land transport. It is symbolic of the command's can do 'Go' attitude in the control or management of CONUS [continental United States] traffic management, land transportation and common-user ocean terminal service.
- The arrow alludes to the military auspices of the organization and to the speed with which it accomplishes its mission.
- The three prongs represent the three Military Departments of the Department of Defense and the joint aspects of its responsibilities and manning.

MTMTS and MTMC's earliest shields featured red lettering in honor of the command's ties to the U.S. Army's Transportation Corps. In later years, MTMC and SDDC shields often featured black or gold lettering rather than the traditional red.

FOLLOW US!



[FACEBOOK.COM/HQSDDC](https://www.facebook.com/HQSDDC)



[TWITTER.COM/HQSDDC](https://twitter.com/HQSDDC)



[LINKEDIN.COM/COMPANY/HQSDDC](https://www.linkedin.com/company/HQSDDC)



[FLICKR.COM/HQSDDCPHOTOS](https://www.flickr.com/photos/HQSDDC/)



[YOUTUBE.COM/HQSDDC](https://www.youtube.com/HQSDDC)



[SDDC.ARMY.MIL](https://sddc.army.mil)

SURFACE WARRIORS!
