

DEFENSE ACCESS ROAD (DAR) PROGRAM



- **Military Surface Deployment and Distribution Command (SDDC)**

Andrea Green-Orr
Engineer for Access Roads
(618) 220-5213

Bryan Hall, P.E.
Engineer for Access Roads
(618) 220-5253

Darryl Hampton, P.E.
Senior Engineer for Access Roads
(618) 220-5578



PUBLIC HIGHWAY PREMISE

The background of the slide is a collage of four images related to highway construction and maintenance. The top-left image shows a large-scale earthmoving project on a hillside with mountains in the background. The top-right image shows a wide, newly paved road with a yellow construction vehicle and workers. The bottom-left image shows a highway with traffic and construction equipment. The bottom-right image shows a worker in a hard hat and safety vest working on the side of a road.

State and Local Highway Agencies

*are responsible for developing
and maintaining public highways
that meet normal defense needs*



PURPOSE



The DAR Program
provides DoD the means to pay its
share for public highway
improvements resulting from
sudden or unusual defense-
generated impacts



BACKGROUND and AUTHORITY



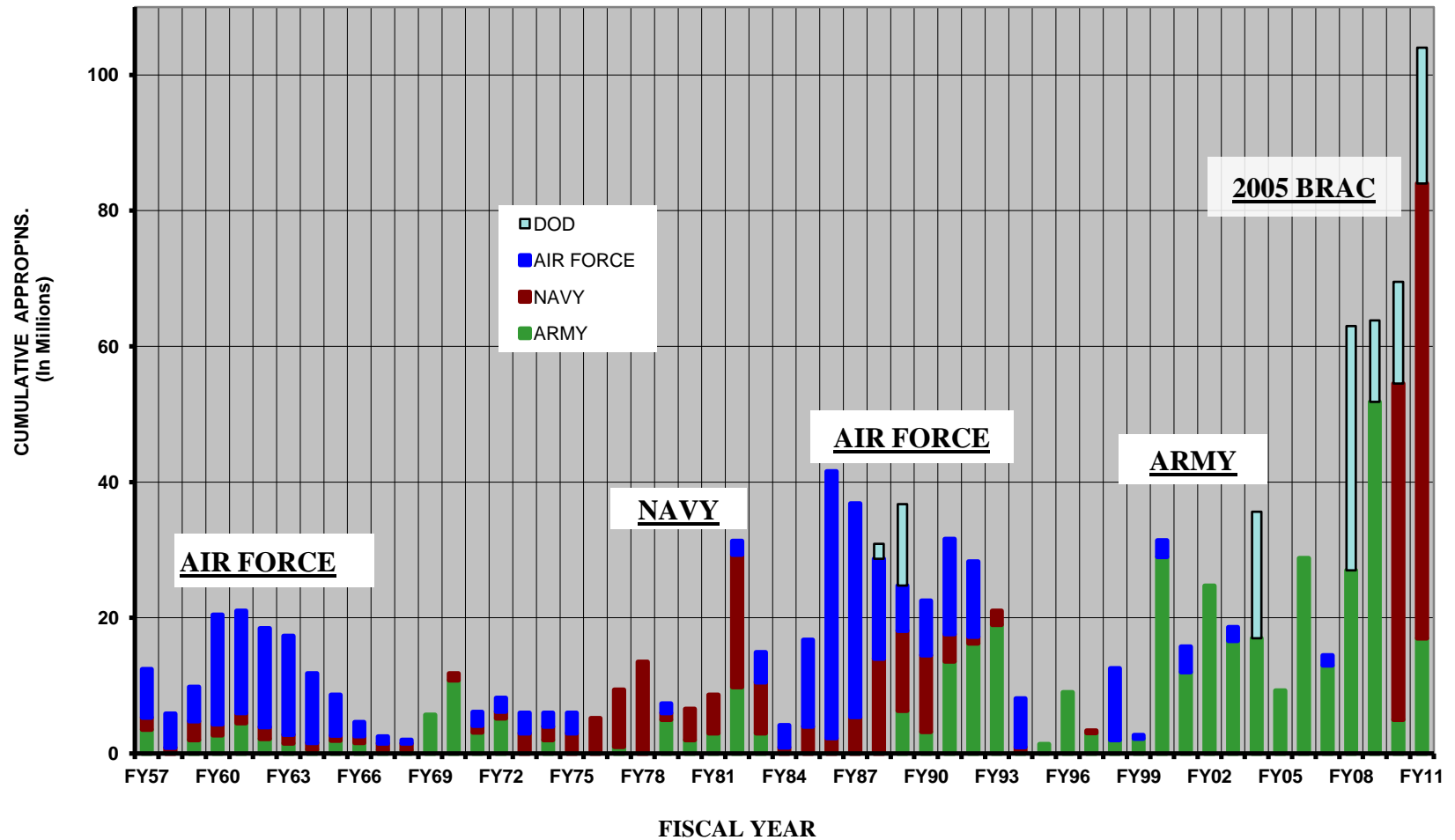
- Program is 60+ years old
- SDDC, in cooperation with FHWA, manage program for all DoD

Authority

- **23 USC 210** – SECDOT auth to spend defense funds on public highways certified important to national defense
- **10 USC 114** – DAR included with MILCON under annual auth/approp
- **DODD 4510.11** – USTRANSCOM directs the program; Commander, SDDC, DoD's certifying agent



DAR APPROPRIATIONS





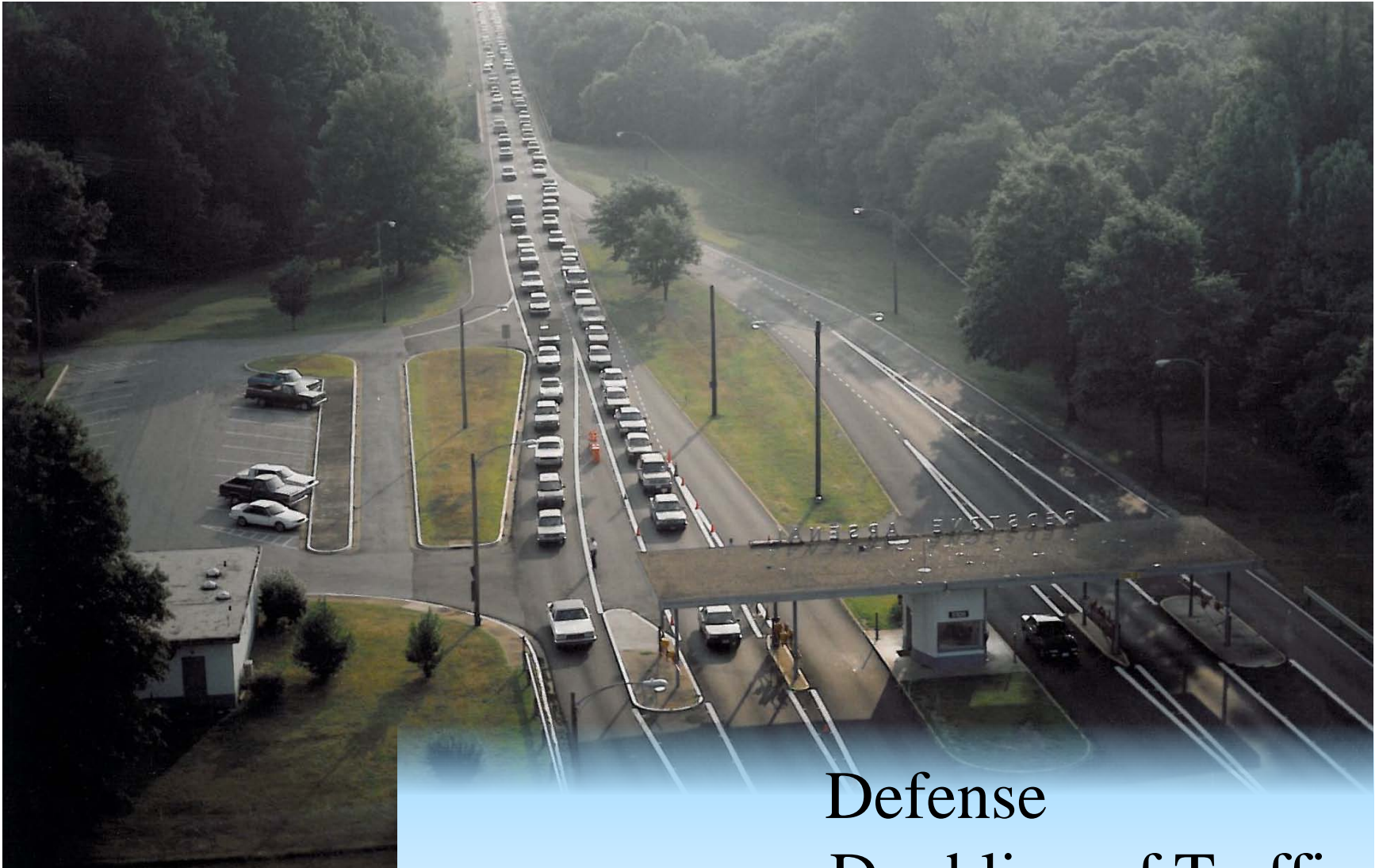
ELIGIBILITY CRITERIA



- Defense doubling of traffic
- New connections to military installations
- Low-type roads with heavy/oversize requirements
- Replacement roads for those closed due to military necessity



ELIGIBILITY CRITERIA



Defense
Doubling of Traffic



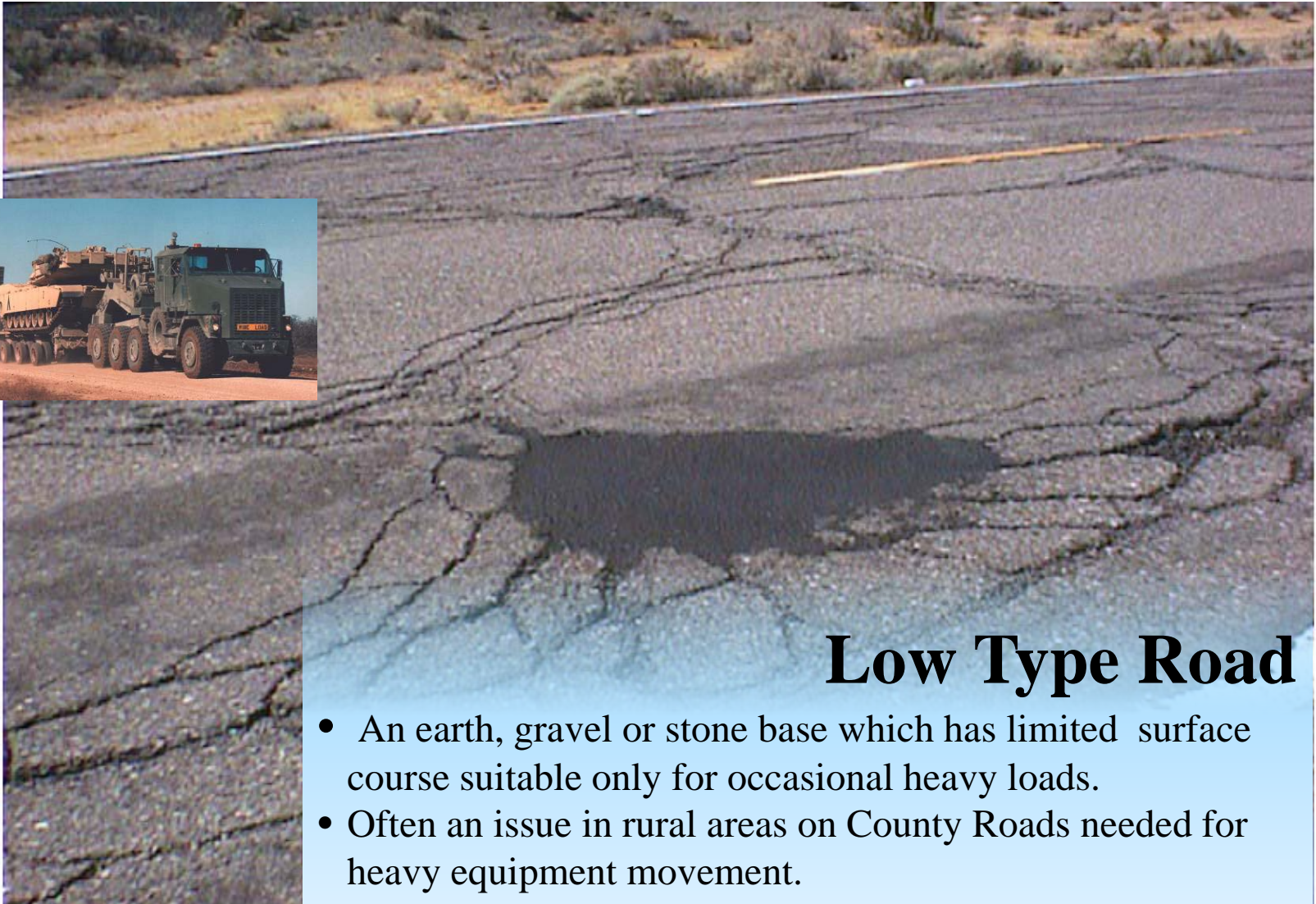
ELIGIBILITY CRITERIA



New Connection to Military
Installation



ELIGIBILITY CRITERIA

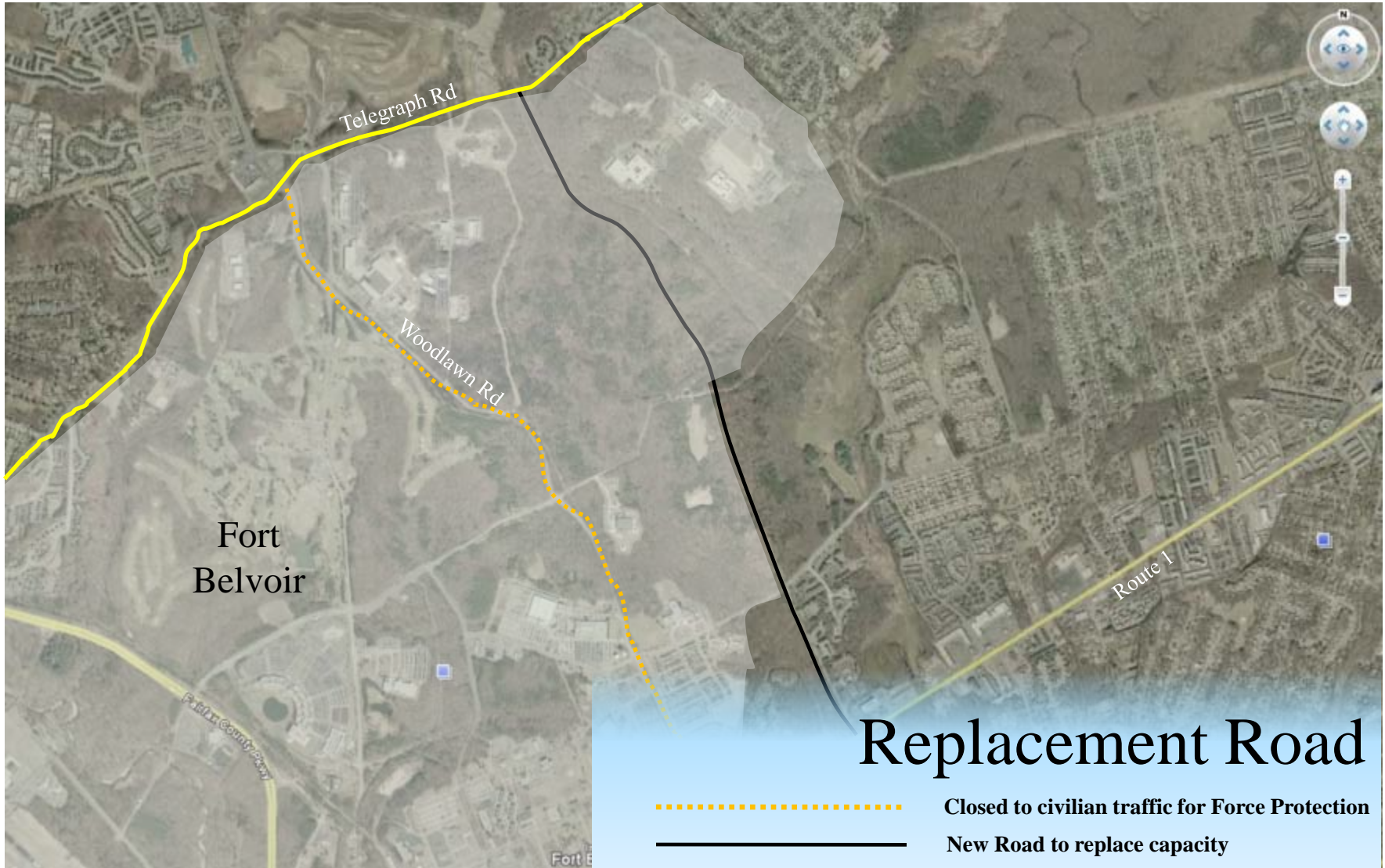


Low Type Road

- An earth, gravel or stone base which has limited surface course suitable only for occasional heavy loads.
- Often an issue in rural areas on County Roads needed for heavy equipment movement.



DAR ELIGIBILITY CRITERIA





DAR FUNDING



- **No Pot of Money**
- **Services program and budget DAR funds**
- **Military Construction funds (5-year money)**
- **Annual Authorizations and Appropriations**
- **Transferred through Treasury to FHWA**
- **Design and construct using same accounts**





DAR PARTNERS



- **Federal Highway Administration**
- **Deputy Under Secretary of Defense (Installations and Environment)**
- **Air Force Deputy Chief of Staff for Installations and Logistics**
- **Naval Facilities Engineering Command (NAVFAC)**
- **National Guard Bureau (NGB)**
- **Army Assistant Chief of Staff for Installation Management (ACSIM)**



DAR PROCESS



Identification of Need by Installation



Evaluation Process By FHWA and SDDC

Certification Process



Design and Construction

Typically by State/local highway authorities using military funds



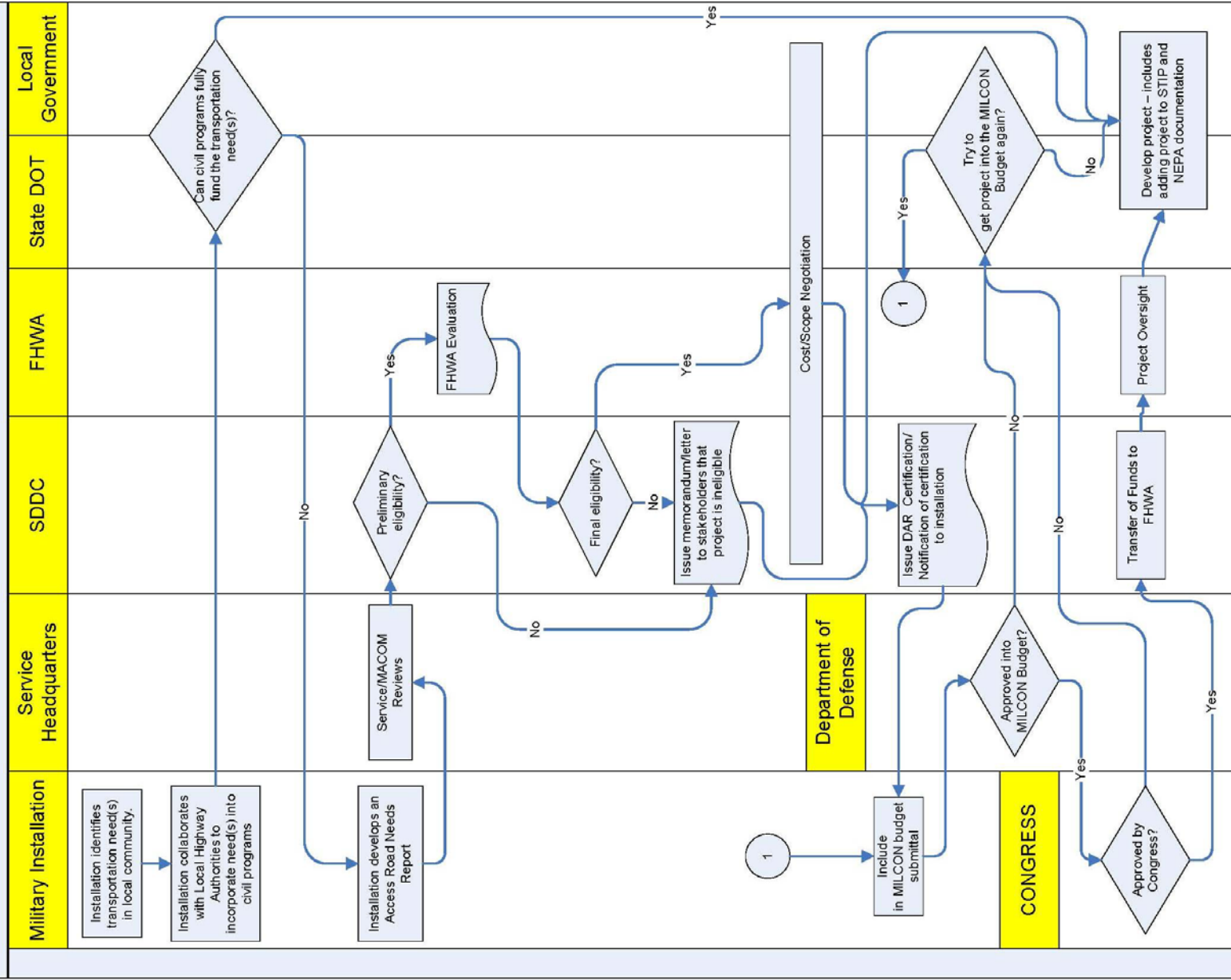
Funding Budget Process



Maintenance

by State/local highway authorities using local funds

Defense Access Road Process Flowchart



DEFENSE ACCESS ROAD (DAR) PROGRAM



**Military Surface Deployment and
Distribution Command (SDDC)
Transportation Engineering Agency**