

KANSAS

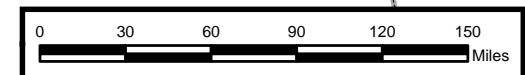
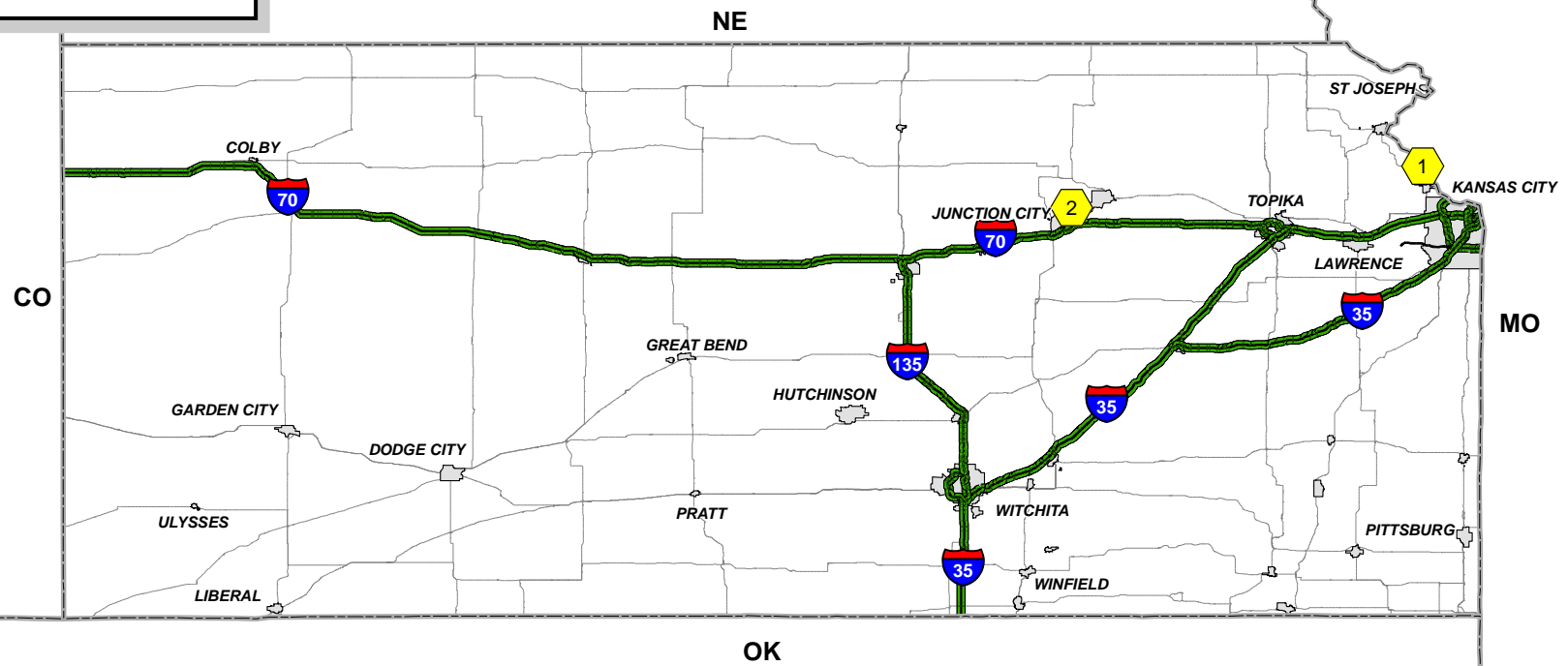
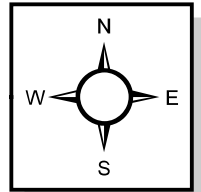
Legend

Installations

STRAHNET

- Interstate STRAHNET
- Non-Interstate STRAHNET
- Other Roads
- URBAN AREAS






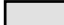
- 1 FORT LEAVENWORTH
- 2 FORT RILEY



Last Updated: June 28 2012

FORT LEAVENWORTH, KANSAS

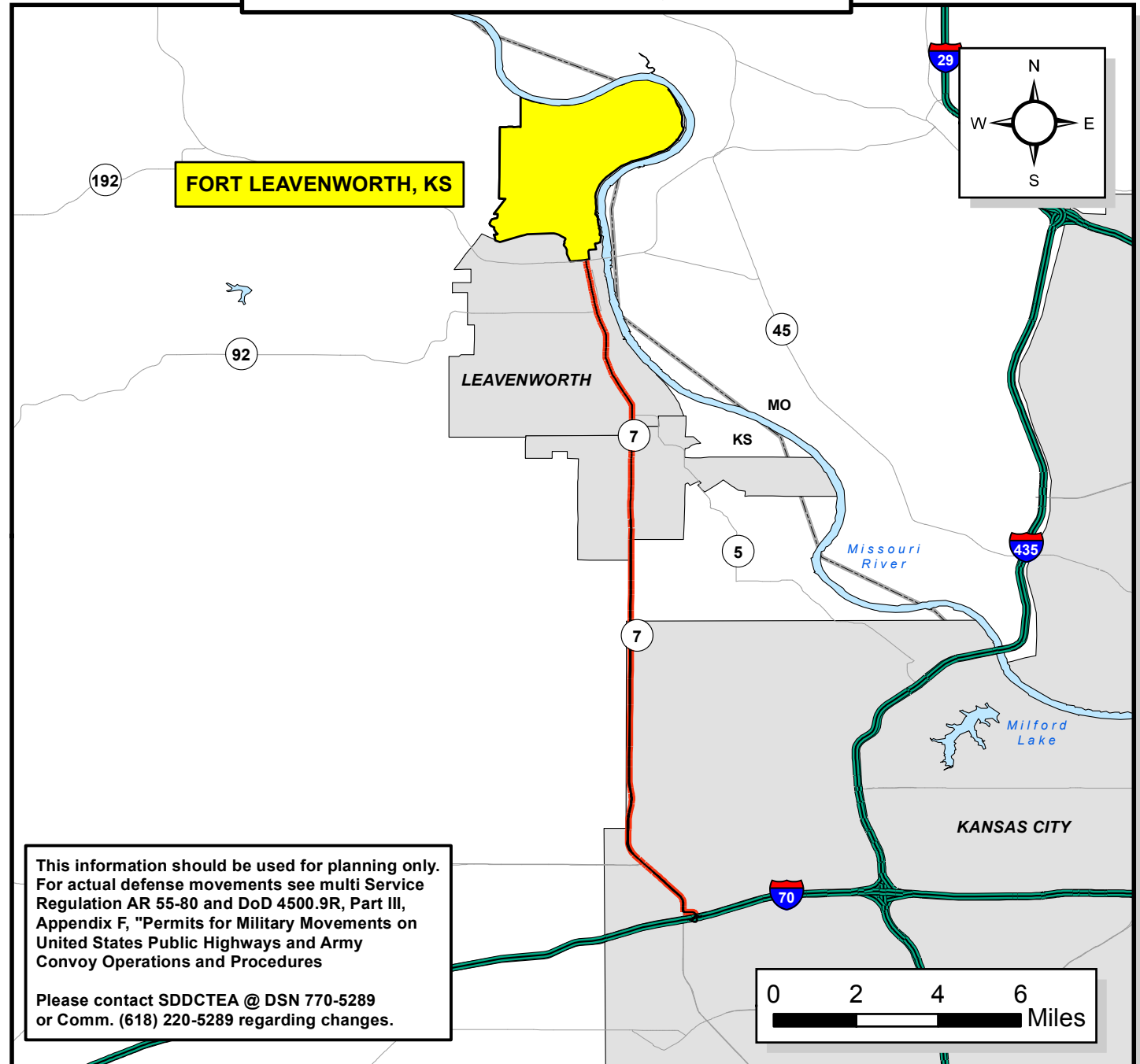
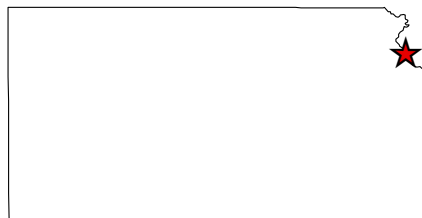
Legend

-  Interstate STRAHNET
-  Non-Interstate STRAHNET
-  STRAHNET Connector
-  Other Roads
-  Installation of Interest
-  URBAN AREAS

ROUTE TO STRAHNET

KS 7 S TO I-70

Connector mileage = 16.67 miles








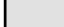
This information should be used for planning only. For actual defense movements see multi Service Regulation AR 55-80 and DoD 4500.9R, Part III, Appendix F, "Permits for Military Movements on United States Public Highways and Army Convoy Operations and Procedures"

Please contact SDDCTEA @ DSN 770-5289 or Comm. (618) 220-5289 regarding changes.

Last Updated: June 28 2012

FORT RILEY, KANSAS

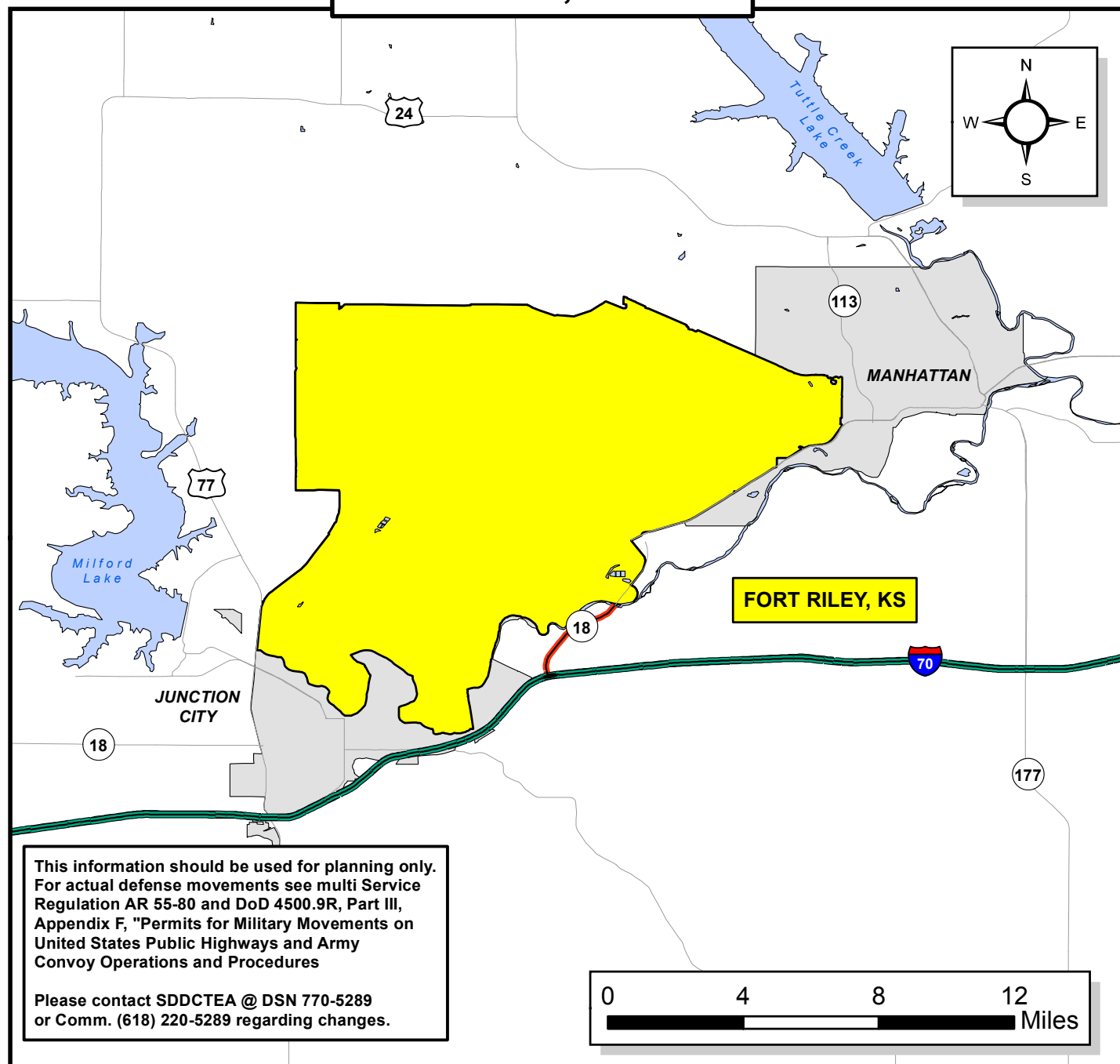
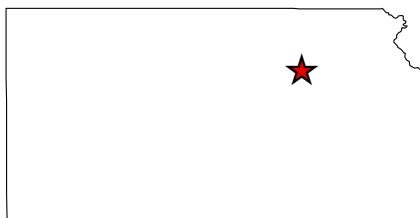
Legend

-  Interstate STRAHNET
-  Non-Interstate STRAHNET
-  STRAHNET Connector
-  Other Roads
-  Installation of Interest
-  URBAN AREAS

ROUTE TO STRAHNET

KS 18 S TO I-70

Connector mileage = 2.78 miles



This information should be used for planning only. For actual defense movements see multi Service Regulation AR 55-80 and DoD 4500.9R, Part III, Appendix F, "Permits for Military Movements on United States Public Highways and Army Convoy Operations and Procedures"

Please contact SDDCTEA @ DSN 770-5289 or Comm. (618) 220-5289 regarding changes.

Last Updated: June 28 2012

KANSAS

NON-INTERSTATE STRAHNET DESCRIPTION

THERE ARE NO NON-INTERSTATE STRAHNET CORRIDORS IN THE STATE OF KANSAS.

Last Updated: 30 JULY 2012