


STRAHNET

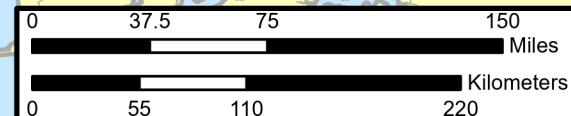
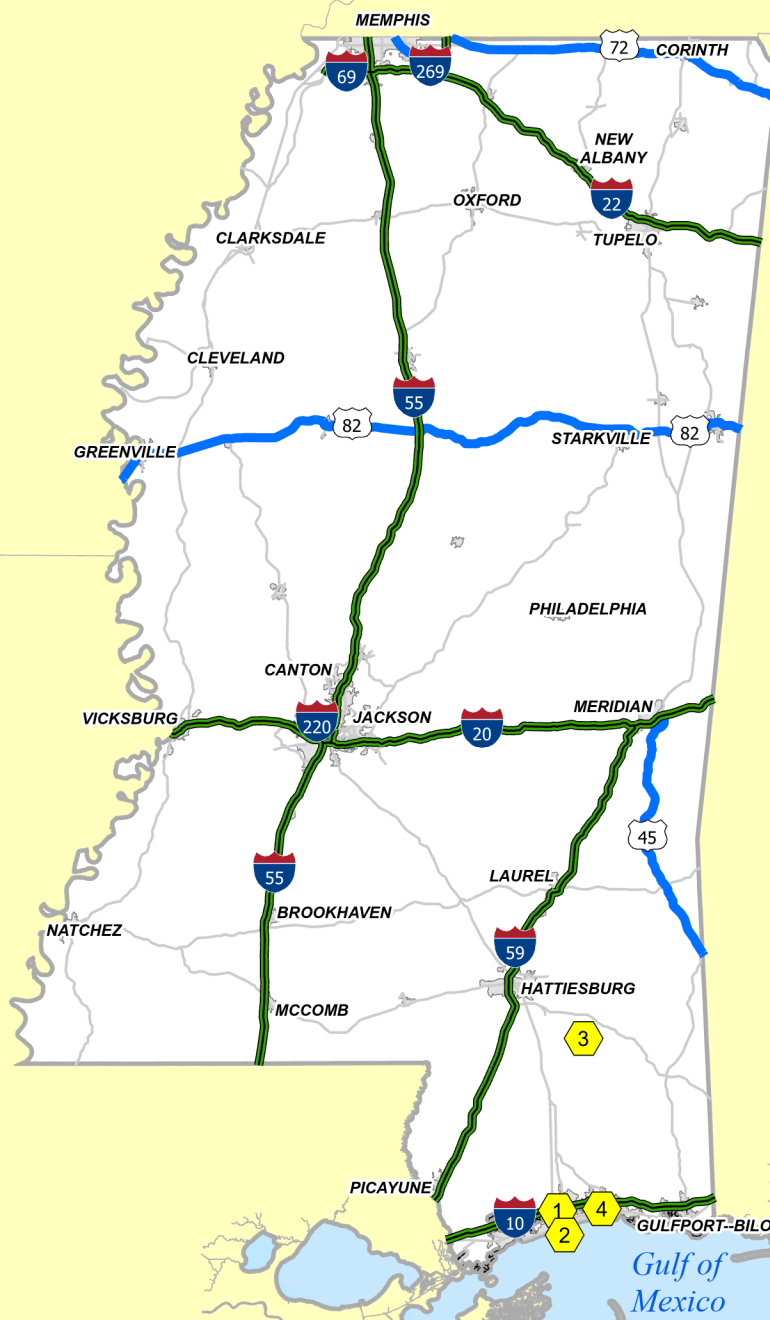
Mississippi

Last Updated: 4/29/2024

Legend

-  Installations
-  Interstate STRAHNET
-  Non-Interstate STRAHNET
-  Other Roads
-  Urban Areas

-  1 NCBC Gulfport
-  2 Port of Gulfport
-  3 Camp Shelby
-  4 Keesler Air Force Base



This information should be used for planning only. For actual defense movements see DoD Manual 4510.12 and DoD Defense Transportation Regulation 4500.9R, Part III, Appendix F, "Military Movements on Public Roads". Please contact usarmy.scott.sddc.mbx.tea-hnd@mail.mil regarding changes.






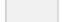


STRAHNET

Naval Construction Battalion Center Gulfport, MS

Last Updated: 4/24/2024

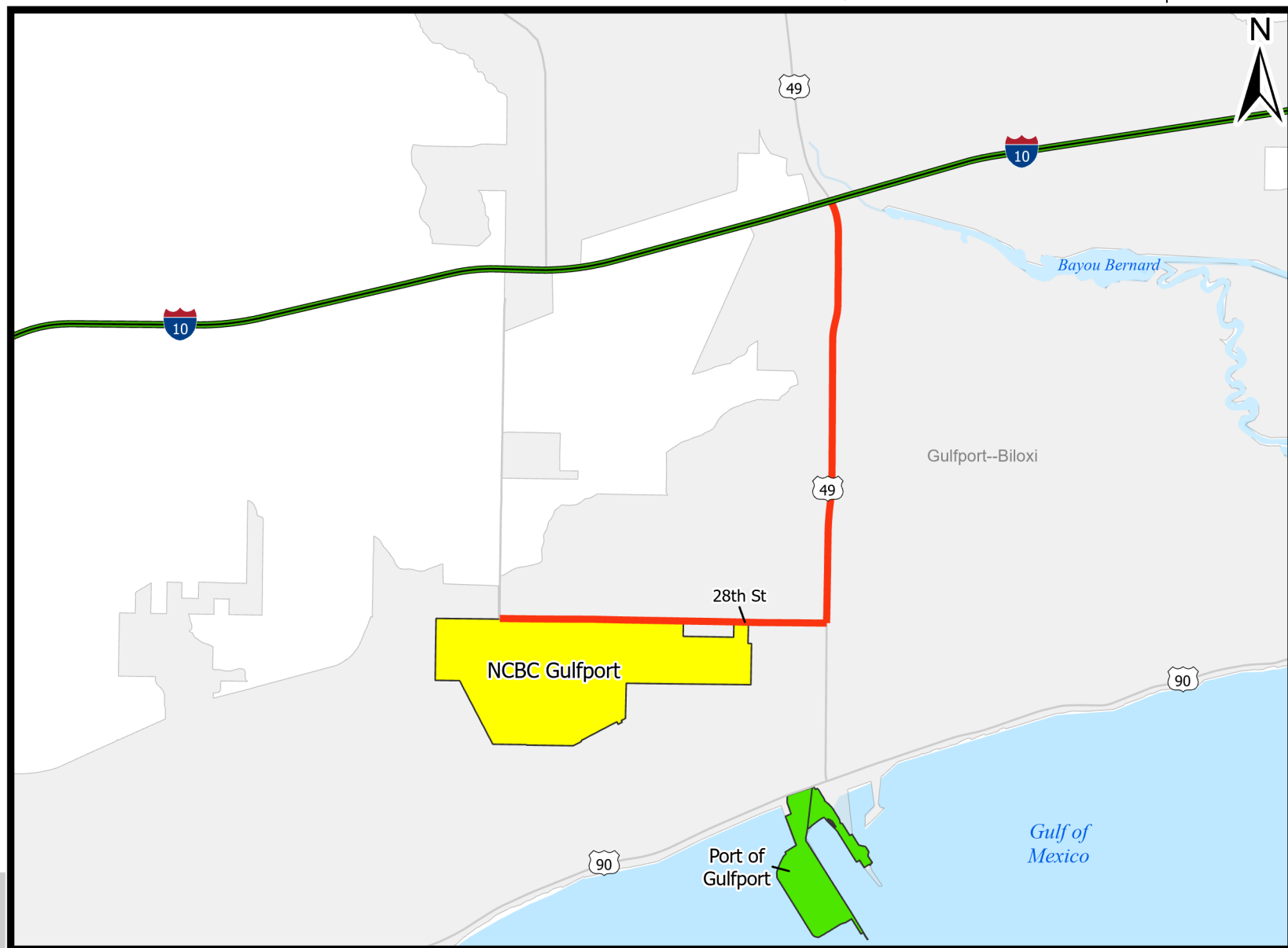
Legend

-  Interstate STRAHNET
-  STRAHNET Connector
-  Other Roads
-  Installation of Interest
-  Other Port
-  Urban Areas

ROUTE TO STRAHNET

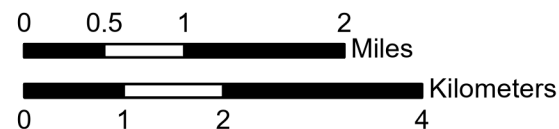
28TH ST E TO US 49,
US 49 N TO I-10

Connector Distance: 5.96 miles



This information should be used for planning only. For actual defense movements see DoD Manual 4510.12 and DoD Defense Transportation Regulation 4500.9R, Part III, Appendix F, "Military Movements on Public Roads".

Please contact usarmy.scott.sddc.mbx.tea-hnd@mail.mil regarding changes.



UNCLASSIFIED

STRAHNET

Port of Gulfport, MS

Last Updated: 4/24/2024

Legend

- Interstate STRAHNET
- STRAHNET Connector
- Other Roads
- Port of Interest
- Other Installation
- Urban Areas

ROUTE TO PORT

I-10 TO US 49,
US-49 S TO PORT

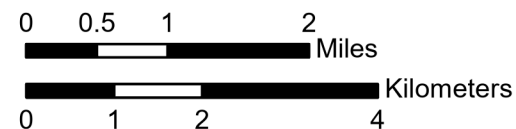


Connector Distance: 4.63 miles



This information should be used for planning only. For actual defense movements see DoD Manual 4510.12 and DoD Defense Transportation Regulation 4500.9R, Part III, Appendix F, "Military Movements on Public Roads".

Please contact usarmy.scott.sddc.mbx.tea-hnd@mail.mil regarding changes.



UNCLASSIFIED

UNCLASSIFIED

STRAHNET

Camp Shelby, MS

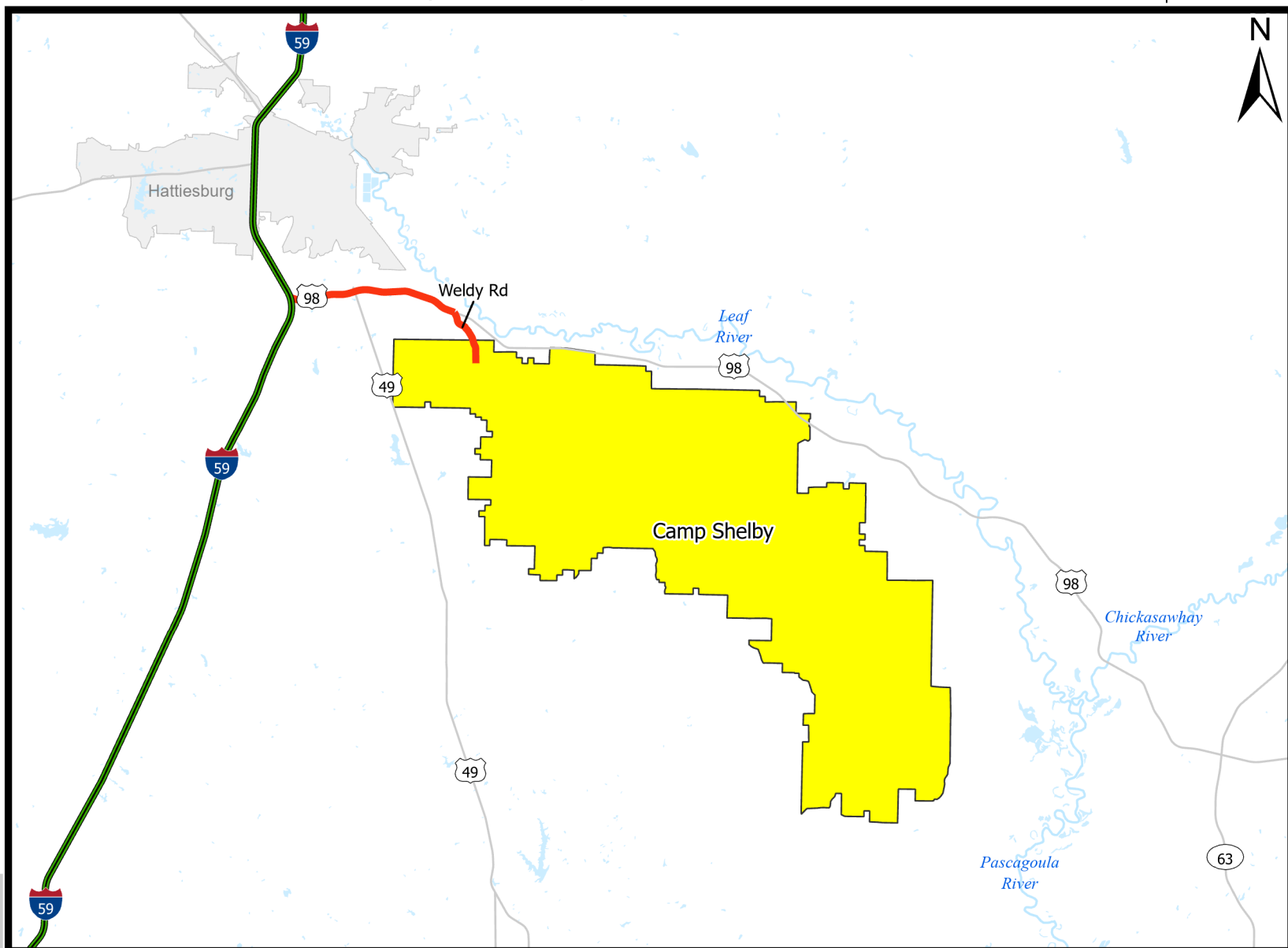
Last Updated: 4/24/2024

- Legend
- Interstate STRAHNET
 - STRAHNET Connector
 - Other Roads
 - Installation of Interest
 - Urban Areas

ROUTE TO STRAHNET

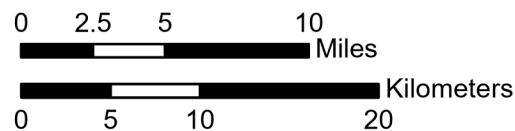
WELDY RD N TO US 98,
US 98 W TO I-59

Connector Distance: 10.17 miles



This information should be used for planning only. For actual defense movements see DoD Manual 4510.12 and DoD Defense Transportation Regulation 4500.9R, Part III, Appendix F, "Military Movements on Public Roads".

Please contact usarmy.scott.sddc.mbx.tea-hnd@mail.mil regarding changes.



UNCLASSIFIED

UNCLASSIFIED

STRAHNET

Keesler Air Force Base, MS

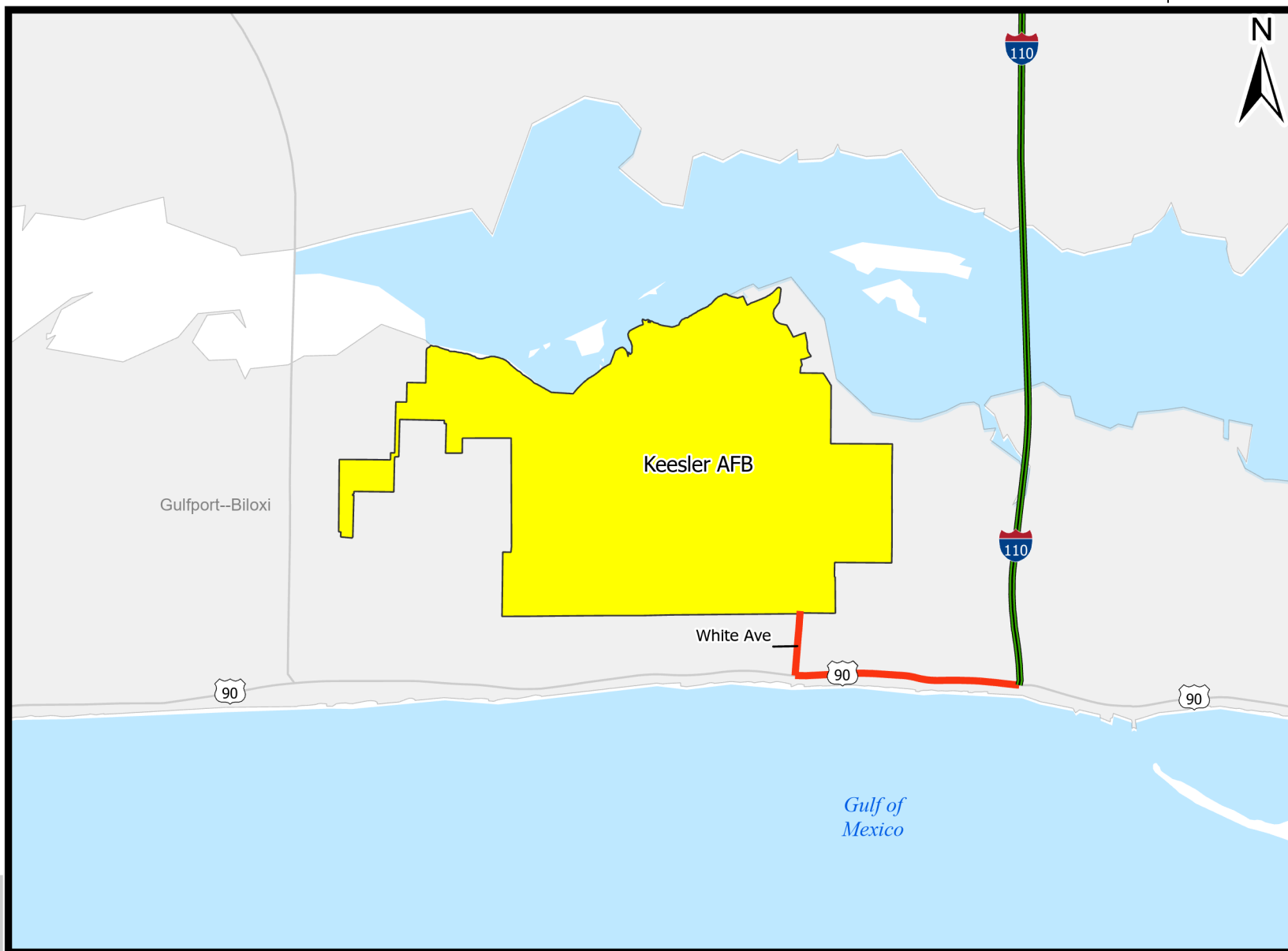
Last Updated: 4/25/2024

- Legend
- Interstate STRAHNET
 - STRAHNET Connector
 - Other Roads
 - Installation of Interest
 - Urban Areas

ROUTE TO STRAHNET

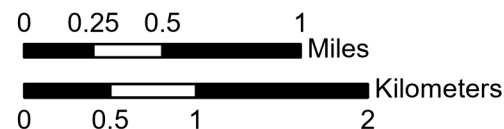
WHITE AVE S TO US 90,
US 90 E TO I-110

Connector Distance: 1.33 miles



This information should be used for planning only. For actual defense movements see DoD Manual 4510.12 and DoD Defense Transportation Regulation 4500.9R, Part III, Appendix F, "Military Movements on Public Roads".

Please contact usarmy.scott.sddc.mbx.tea-hnd@mail.mil regarding changes.



UNCLASSIFIED

MISSISSIPPI

NON-INTERSTATE STRAHNET DESCRIPTION

HIGHWAY ROUTE NUMBERS	ROUTE DESCRIPTION	APPROX. MILEAGE	INSTALLATIONS ALONG THE CORRIDOR
US 72	(Along the northern border of Mississippi) From the Tennessee/Mississippi border to the Alabama/Mississippi border.	90	None
US 78	From the Tennessee/Mississippi border (south of Memphis, TN) to I-269.	12	None
US 82	From the Arkansas/Mississippi border near Greenville to the Alabama/Mississippi border, east of Columbus.	173	None
US 45	From I-20 at Meridian to the Alabama/Mississippi border.	74	None

Last Updated: 29 APR 2024