
MILITARY SURFACE DEPLOYMENT AND DISTRIBUTION COMMAND

SDDDC

CAPABILITIES BOOK



U.S. ARMY



INDEX

3 – SDDC Headquarters

4 – SDDC Active Duty Organizations

5 – Transportation Surface Brigade

6 – Transportation Battalion

7 – Transportation Company

8 – Transportation Detachment

9 – Rapid Port Opening Element

10 – SDDC Reserve Organizations

11 – Deployment Support Command

13 – Transportation Surface Brigade

14 – SDDC's Global Presence

16 – Expeditionary Rail Center

17 – Deployment & Distribution Support Battalion

18 – Expeditionary Terminal Operations Element

19 – Automated Cargo Documentation Detachment

20 – SDDC Business Systems Portfolio

22 – TEAMS & GFM

23 – IBS & ICODES

24 – CAS & TGIS

25 – DTOD & JECD

26 – ISDDC & PAT

27 – SN & TFMS

28 – IOCC & JCM



CAPABILITIES OVERVIEW

SDDC HEADQUARTERS

The Military Surface Deployment and Distribution Command is headquartered at Scott Air Force Base, Illinois, approximately 30 minutes east of St. Louis, Missouri. The command is collocated and shares a building with the United States Transportation Command. SDDC headquarters consists of the Command Group, a Headquarters and Headquarters Detachment, G-Staff Directorates, Special Staff Offices and the Transportation Engineering Agency.

COMMAND GROUP

Headquarters and Headquarters Detachment

G-Staff Directorates:

- G1: Personnel and Manpower
- G2: Intelligence
- G3: Operations
- G4: Logistics and Engineering
- G5: Strategy and Plans
- G6: Information Technology
- G8: Resource Management
- G9: Acquisition Management

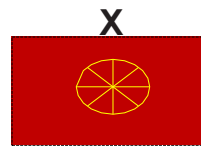
Special Staff Offices:

- Chaplain
- Diversity and Inclusion
- Inspector General
- Internal Audit
- Military Equal Opportunity
- Ombudsman
- Public and Congressional Affairs
- Safety
- SHARP
- Staff Judge Advocate

Transportation Engineering Agency:

- Futures/Science and Technology
- Systems and Data Management
- Distribution Infrastructure/Office of Special Assistant
- Programming, Deployment and Transportability

SDDC ACTIVE DUTY ORGANIZATIONS



TRANSPORTATION SURFACE BRIGADE

SDDC's active duty force is manned, equipped and trained, and geographically positioned to ensure warfighting readiness. They provide surface mobility options to ensure strategic readiness, instill confidence in our Allies and mission partners, deter our enemies, and support warfighting requirements to the point of need. With five active-duty transportation brigades and their subordinate battalions located throughout Europe, Asia, the Pacific and the continental United States, these units are prepared to support Combatant Commanders and deliver readiness to the warfighter.

MISSION:

SDDC's active duty Transportation Surface Brigade missions differ based on their geographic location and supported Combatant Command.



595th Transportation Surface Brigade: Integrate and synchronize surface deployment and distribution capabilities to move, deploy, and sustain the Armed Forces in support of all U.S. Central Command operations.



596th Transportation Surface Brigade: Integrate and synchronize surface deployment and distribution capabilities west of the Rockies and execute port operations at MOTSU, MOTCO and strategic seaports along the west coast and Alaska to move, deploy, and sustain the Armed Forces. Provide installation command for MOTSU and MOTCO in order to ensure ready and resilient infrastructure to project ammunition globally.



597th Transportation Surface Brigade: Integrate and synchronize surface deployment and distribution capabilities in the continental United States to move, deploy, and sustain the Armed Forces off the east and gulf coasts in support of U.S. Southern Command and global operations. Be prepared to provide surface rapid port opening capabilities in support of Joint Task Force Port Opening (JTF-PO).



598th Transportation Surface Brigade: Integrate and synchronize surface deployment and distribution capabilities to move, deploy, and sustain the Armed Forces in support of U.S. European Command and U.S. Africa Command.



599th Transportation Surface Brigade: Integrate and synchronize surface deployment and distribution capabilities to move, deploy, and sustain the Armed Forces in support of U.S. Indo-Pacific Command.

CAPABILITIES:

- Manage Marine Related Activities
- Conduct Expeditionary Deployment Operations at the Brigade Level
- Manage Transportation Operations in support of Reception, Staging, and Onward Movement
- Conduct Actions associated with Area Defense



TRANSPORTATION BATTALION

MISSION:

SDDC's active duty Transportation Battalions plan, execute and integrate surface deployment and distribution capabilities to project and sustain the Armed Forces in support of their assigned brigade's supported Combatant Command.



595th Transportation Surface Brigade includes:

- 831st Transportation Battalion
- 840th Transportation Battalion



596th Transportation Surface Brigade includes:

- 833rd Transportation Battalion
- 834th Transportation Battalion



597th Transportation Surface Brigade includes:

- 832nd Transportation Battalion
- 841st Transportation Battalion
- 842nd Transportation Battalion



598th Transportation Surface Brigade includes:

- 838th Transportation Battalion
- 839th Transportation Battalion



599th Transportation Surface Brigade includes:

- 835th Transportation Battalion
- 836th Transportation Battalion
- 837th Transportation Battalion

CAPABILITIES:

- Conduct Expeditionary Deployment Operations at the Battalion Level
- Manage Marine Related Activities
- Direct Vessel Operations Support
- Conduct Actions associated with Area Defense
- Coordinate Surface Transportation Support



TRANSPORTATION COMPANY

MISSION:

Conduct water port and distribution operations in an assigned Area of Responsibility (AOR). On order, plans and conducts reception, disposition and staging operations; plans and conducts contingency and strategic deployment/redeployment operations; and conducts port assessments throughout the area of responsibility.

CAPABILITIES:

- Vessel loading and discharge
- Cargo documentation
- Customs clearance
- Container freight station management
- Limited container repair
- Agricultural inspections, certification, and cargo cleaning
- Contract management and oversight
- Ammunition and hazardous cargo handling
- Support Deployment and Distribution Support Teams
- Commercial Container throughput

EMPLOYMENT & ALLOCATION:

The 950th Transportation Company, assigned to the 598th Transportation Brigade, is SDDC's only Transportation Company and supports the European Command AOR.





TRANSPORTATION DETACHMENT

MISSION:

Conduct surface deployment and distribution, provide 100% In-Transit Visibility (ITV), and maintain oversight of Defense Transportation System (DTS) cargo within an operationally assigned geographic area.

CAPABILITIES:

- Conduct surface deployment and distribution and ocean terminal port operations
- Exercise mission command, planning, booking, technical oversight and contractual oversight of strategic surface distribution operations
- Maintain 100% ITV of DTS cargo

EMPLOYMENT & ALLOCATION:

Depending upon geographic location and combatant command support requirements. Each active duty Transportation Surface Brigade includes between two and six Transportation Detachments.



RAPID PORT OPENING ELEMENT

Rapid Port Opening Elements (RPOE) represent the Army's contribution as the surface element to the Joint Task Force Port Opening, facilitating the movement of warfighters, equipment and supplies globally and providing Combatant Commanders with a flexible tactical arm to reinforce any port worldwide.

The Army's ability to deploy quickly to a contested or uncontested environment depends on agile and adaptive maneuver units and key strategic enablers. RPOEs are unique and adaptable teams comprised of agile Surface Warriors capable of being en route to open a port anytime, anywhere in the world within 12 hours of notification.

MISSION:

Establish an Initial Rapid Entry Aerial Port of Debarkation (APOD), Node, In-Transit Visibility (ITV), and Clearance/Distribution operations in a Combatant Commander's Joint Operational Area to receive and trans-load cargo and personnel to a marshalling area for distribution and/or movement forward.

CAPABILITIES:

- Provide leadership, mission planning, operations and technical guidance for port opening operations
- Receive, trans-load and move cargo onto surface transport vehicles and move to a distribution point or marshalling area up to 10 km from the port.
- Receive and coordinate transportation for up to 600 arriving passengers
- Operate one forward marshalling area up to 10 km from APOD
- Source data for ITV of cargo and passengers at APOD, distribution node, and marshalling area

EMPLOYMENT & ALLOCATION:

Within the JTF-PO, RPOEs are part of the DOD's Global Response Force, under the operational control of USTRANSCOM, designed to rapidly deploy to operations as part of a more significant national effort, which facilitates the foundational backbone of an expandable distribution network. RPOEs allow Combatant Commanders to expeditiously establish a Port of Debarkation in an unimproved or austere condition as a part of the JTF-PO. With only three detachments of its kind in the Army, RPOEs are assigned to the 832nd Transportation Battalion, 597th Transportation Brigade at Joint Base Langley-Eustis.

SDDC RESERVE ORGANIZATIONS



SDDC's Total Force is made up of trusted professionals from both the Active and Reserve Components. The integration of SDDC's Reserve force, the Deployment Support Command (DSC), ensures wartime requirements can be met and is critical to SDDC's success. The DSC brings a highly trained and ready Reserve transportation capability to the fight that can be rapidly integrated into operations — it is the essential component that allows SDDC to accomplish its mission. We must continue to leverage the capabilities of our Total Force to ensure mission readiness while ensuring AC and RC capabilities remain integrated to meet future requirements in support of the Joint Force.



DEPLOYMENT SUPPORT COMMAND



HEADQUARTERS: Birmingham, Alabama

MISSION:

Exercise mission command and provide technical training and readiness oversight (TTRO) to assigned units performing port, rail and deployment/distribution support missions and functions, enabling operational depth to the joint deployment and distribution enterprise (JDDE). Execute force projection and provide a mission support element for the SDDC Surface Operations Center.

CAPABILITIES:

- Provide Technical Training and Readiness Oversight for terminal/rail units
- Provide mobile training team support for Strategic Deployment Suites (SDS) Systems
- Provide staffing to the SDDC Surface Operations Center
- Serve as mission command Headquarters
- Provide staffing support for a Joint Deployment and Distribution Operation Center (JDDOC) or a Director, Mobility Forces Surface (DM4-S)



TRANSPORTATION SURFACE BRIGADE



The Deployment Support Command includes four CONUS-based Reserve Transportation Surface Brigades.

- 1179th TSB – Fort Hamilton, New York**
- 1189th TSB – Charleston, South Carolina**
- 1190th TSB – Baton Rouge, Louisiana**
- 1394th TSB – Camp Pendleton, California**

MISSION:

Command, control and technically supervise assigned and attached SDDC battalions engaged in terminal operations, terminal supervision and management operations, movement control operations, and other mobility support operations.

CAPABILITIES:

- Serve as mission command/C2 for operational movements in a theater of operation
- Open seaports in support of deploying forces for a theater opening
- Develop and implement programs, plans and policies for assigned and attached units and contract Wartime Host Nation Support (WHNS) providing surface mobility support
- Serve as a nucleus transportation organization during early stages of a buildup of an immature theater

EMPLOYMENT & ALLOCATION:

Reserve Transportation Surface Brigades are assigned a geographic region with multiple strategic seaports and are operationally controlled (OPCON) to SDDC when mobilized.

SDDC'S GLOBAL PRESENCE

"Desert Knights"
595th

USCENTCOM
Camp Arifjan, Kuwait

"Ironclad...Delivering Firepower"
596th

USNORTHCOM
Southport, NC

"Rapid Support!"
597th

USNORTHCOM / USSOUTHCOM
Joint Base Langley-Eustis, VA

"Warrior Logistics - In Motion!"
598th

USEUCOM / USAFRICOM
Sembach, Germany

"Koa Kokua - Warrior Support"
599th

USINDOPACOM
Schofield Barracks, HI

"Support with Pride"
DSC

US ARMY RESERVE
Birmingham, AL

GLOBAL PRESENCE

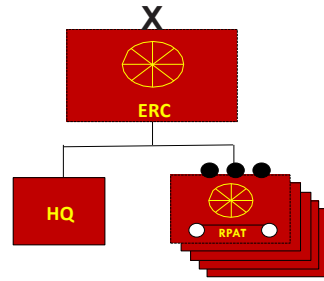
GLOBAL PRESENCE



SURFACE WARRIORS

EXPEDITIONARY RAIL CENTER

In addition to its four Reserve Transportation Surface Brigades, the DSC also includes an Expeditionary Rail Center.



MISSION:

Provide rail network capability and infrastructure assessments, perform rail mode feasibility studies and advise on employment of rail capabilities, coordinate rail and bridge safety assessments, perform and assist with rail planning, coordinate use of Host Nation (HN) or contracted rail assets.

CAPABILITIES:

- Strategic and operational rail planning
- Railway system capability and infrastructure assessments
- Rail feasibility studies and advice on employment of rail capabilities
- Coordination of Host Nation or contracted rail assets
- In-transit visibility during rail movement
- Direct coordination and interface with Host Nation rail officials
- Perform Contracting Officer's Representative (COR) duties for rail support
- Provide operational rail support

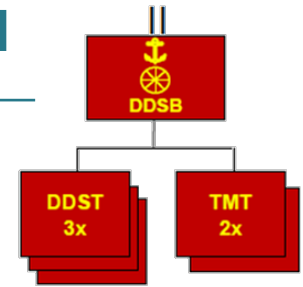
EMPLOYMENT & ALLOCATION:

The ERC consists of a headquarters section and five Rail Planning and Assessment Teams (RPAT). Each RPAT contains three Rail Assessment Teams (RAT). RPATs and RATs are employed as needed with Theater Sustainment Commands, Expeditionary Sustainment Commands and Sustainment Brigades to meet theater-level requirements for rail expertise.

DEPLOYMENT & DISTRIBUTION SUPPORT BATTALION

ORGANIZATION:

Each Transportation Surface Brigade includes three DDSBs, for a total of 12 within the DSC. The DDSBs are made up of 94 personnel, including three Deployment and Distribution Support Teams (DDSTs) with 8 personnel each and two Terminal Management Teams (TMTs) with 19 personnel each.



MISSION:

DDSBs command, control and technically supervise assigned and attached units engaged in terminal operations, terminal management, and deployment and distribution support operations. With the assistance of SDDC strategic communications capabilities, these battalions also provide in-transit visibility of surface cargo for units, commanders, and USTRANSCOM.

CAPABILITIES:

- Serve as Single Port Manager for a strategic seaport
- Plan, establish and conduct port operations to include cargo reception, staging, load planning, vessel load and discharge operations, and port clearance
- Provide documentation services to facilitate ITV
- Monitor stevedore contractors and provide timekeeping services
- Provide guidance and supervision for all cargo handling
- Coordinate with various outside agencies such as deploying units, Military Sealift Command, US Coast Guard, and Port Authorities
- Support deploying units worldwide by providing Deployment and Distribution Support Teams to deploying unit locations
- Support HAZMAT documentation and operations
- Coordinate Radio Frequency Identification (RFID) utilization
- Operate satellite communications equipment and systems
- Perform Container Management operations in support of SDDC's end-to-end distribution mission

EMPLOYMENT & ALLOCATION:

Located at established partner inland and water terminals, DDSBs are ready to operate from austere locations as needed. They are operationally controlled (OPCON) to SDDC and align to SDDC Transportation Surface Brigades while supporting a Theater Command.

EXPEDITIONARY TERMINAL OPERATIONS ELEMENT

MISSION:

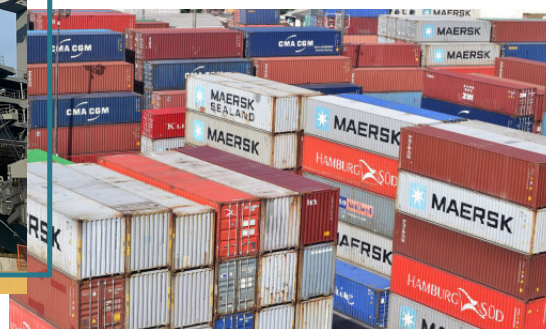
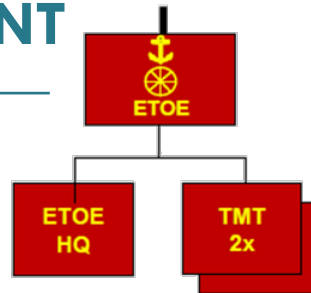
Manage terminal operations performed by contracted or other Host Nation labor forces in seaports, and provide cargo documentation services and in-transit visibility in seaports.

CAPABILITIES:

- Manage two vessel berths in seaports 24 hours per day including supervising, managing, administering, and monitoring contract labor for stevedore and related terminal services (S&RTS)
- Automated cargo documentation support
- Vessel and port reception and clearance
- Stow planning
- ITV of all cargo flowing through the port
- Contracting Officer's Representative for port operations contracts

EMPLOYMENT & ALLOCATION:

There are 18 ETOEs within the DSC, each containing 41 personnel. Assigned or attached to Transportation Battalions or DDSBs, ETOEs conduct ocean cargo accounting and documentation operations at fixed ports, inland waterways, and Logistics Over-the-Shore (LOTS) water terminals.



AUTOMATED CARGO DOCUMENTATION DETACHMENT

MISSION:

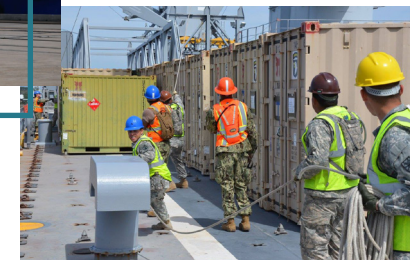
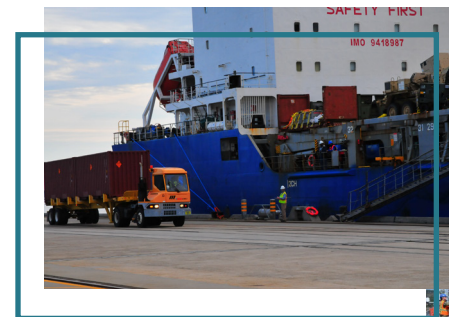
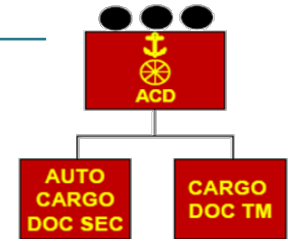
Provide automated documentation support for cargo discharged from ships. Specifically document receipt of cargo and reconcile with ship manifests, prepare Transportation Control Movement Documents for first destination transportation, and prepare discrepancy reports for the cargo accounting section of the Terminal Battalion.

CAPABILITIES:

- Support breakbulk, container, and roll-on/roll-off cargo being discharged from up to two ships in fixed ports
- Unload one ship in a LOTS operation in 24 hours
- Load one ship in a fixed port or LOTS operation in 24 hours

EMPLOYMENT & ALLOCATION:

Assigned or attached one per DDSB, the DSC's 10 Automated Cargo Documentation Detachments, containing 20 personnel each, conduct ocean cargo accounting and documentation operations at fixed ports, inland waterways, and Logistics Over-the-Shore water terminals.

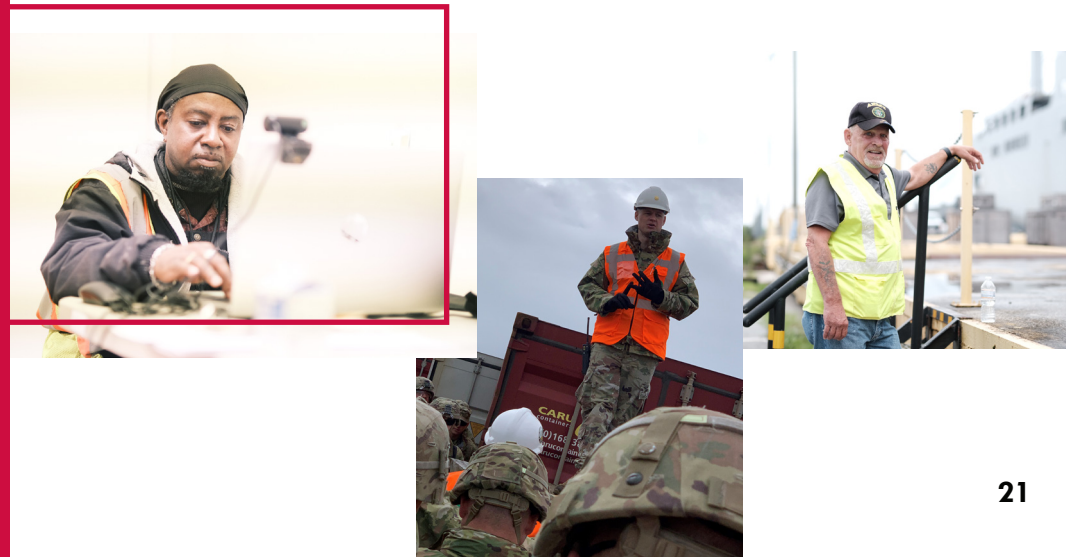


SDDC BUSINESS SYSTEMS PORTFOLIO



To accomplish our mission, SDDC must effectively use data and systems to support operational planning and decision making. Employment of sophisticated analysis, modeling and simulation software allows detailed assessment of transportation plans to include throughput capability, node and route effectiveness, theater movement assets required, and potential bottlenecks or constraints.

Comprehensive analysis of transportation feasibility, throughput, force closure profiles and infrastructure assessments ensure effective support of Combatant Commander requirements. SDDC's interoperable surface transportation systems enable the movement, deployment and sustainment of forces across the Joint Deployment Distribution Enterprise while ensuring system protection, network security and defense from cyber-attack.



TEAMS

TRANSPORTATION ENHANCED ACCESS MANAGEMENT SERVICE

FUNCTIONALITY: Identity and Access Management

PRIMARY CUSTOMER-BASE: SDDC transportation systems such as IBS, GFM, TFMS, and USTRANSCOM Defense Personal Property System. (>350K accounts)

The Transportation Enhanced Access Management Service provides a single enterprise service for Identity and Access Management via Multi-Factor Authentication secure login. TEAMS' front-end processes offer a central launching point for applications, authenticated via ECA, CAC w/PIV, User-Id and YubiKey. The administrative functions of TEAMS include workflows for approving, suspending, activating, and revoking user accounts, and provide Custom Data Analytics for detailed auditing by program.

GFM

GLOBAL FREIGHT MANAGEMENT

FUNCTIONALITY: Commercial freight transportation service.

PRIMARY CUSTOMER-BASE: Transportation Officers, shippers and TCAQ (>20K user accounts).

Global Freight Management provides the DOD an electronic commerce capability for the procurement of commercial freight transportation services, streamlining carrier payment through third party payment systems. GFM provides a centralized automated freight rating and ranking system, a Spot Bid system for over-weight, over-dimensional or other unique shipments, and an interface for DOD-contracted Small Package (shipments of less than 300 pounds) domestic and international express carriers. GFM also provides a performance monitoring capability for DOD carriers and a discrepancy identification service for resolving damages to DOD shipments.

IBS

INTEGRATED BOOKING SYSTEM

FUNCTIONALITY: Commercial ocean transportation services procurement and cargo booking capability.

PRIMARY CUSTOMER-BASE: SDDC (HQ and Transportation BDE/BN), Commercial Carriers, Shippers and Bookers.

IBS is the lead execution system of the Defense Transportation System for the global shipment of ocean cargo in support of all peacetime, wartime, contingency, and humanitarian relief operations where Government personnel are involved. IBS provides SDDC the capability to electronically procure commercial transportation services for the global strategic deployment of DOD-sponsored cargo. The IBS suite of interoperable applications includes, but is not limited to, providing automated tools to support carrier contract requirement definition, rate and service solicitations and evaluation, vessel schedules, booking unit and sustainment cargo, producing shipment documentation, providing cargo offering and status information, providing payment information, and producing order, customs, and manifesting documentation.

ICODES

INTEGRATED COMPUTERIZED DEPLOYMENT SYSTEM

FUNCTIONALITY: Multi-modal load planning and terminal management.

PRIMARY CUSTOMER-BASE: Water, Rail and Air terminals, Unit Movement Planners.

ICODES is a fully integrated information system that provides multi-modal load planning capabilities to DOD Agencies and Services. The combined functionality of ship, air, truck, rail, and yard planning services provides commanders, planners, and operators with a single platform capable of producing and evaluating load plans and alternative actions for various sized units, employing various modes of transportation, in support of peacetime or wartime operations. ICODES consumes cargo and passenger information from a variety of DOD manifesting systems and, in return, provides load planning, report generation, and forecasting services to USTRANSCOM and its component commands, DOD customers, and other authorized users. ICODES is also the Sea Service's (USN, USMC & USCG) System of Record for unit deployment planning. The capability is used to create and maintain Unit Deployment List and generates the necessary documentation to request mode and source shipment instructions for Air, Ship and Commercial Line-Haul.

CAS

CARRIER APPOINTMENT SYSTEM

FUNCTIONALITY: Scheduling and tracking delivery of motor carrier shipments.
PRIMARY CUSTOMER-BASE: Commercial Carriers and DOD CONUS locations (76 sites).

The Carrier Appointment System (CAS) is a web-based application developed to provide facilities with a calendar tool to manage their deliveries. CAS has the capability for carriers to request appointments for deliveries to DOD locations, see announcements for locations, and be notified when the appointment is approved. Depot managers have the ability to approve, create, edit, or reject requested appointments. CAS also provides an audit area for delivery/carrier performance comments.

TGIS

TRANSPORTATION GEOSPATIAL INFORMATION SYSTEM

FUNCTIONALITY: Provides geographical mapping and visualization data services on both NIPR and SIPR environments.
PRIMARY CUSTOMER-BASE: Defense Tracking Transportation System (DTTS); the Defense Courier Division (DCD); USTRANSCOM Joint Distribution Process Analysis Center (JDPAC); Program Executive Office Enterprise Information Systems (PEO EIS) and TGIS' GIS platform provides geospatial services to all the Enterprise.

TGIS is an interactive mapping interface integrating a variety of static and real-time information sources including road conditions, incidents, and weather. TGIS includes the Defense Transportation Tracking Service. The DTTS application is used to manage all arms, ammunition, and explosives (AA&E) shipments movements within the continental United States. TGIS provides DTTS operators with mapping visualization and mission management collaboration tools for real-time map locations, emergency notifications, and situational awareness of equipment and munitions. TGIS also provides mapping as a service via APIs to external systems. The TGIS program utilizes the ESRI's ArcGIS COTS tools for web-based collaborative data and map-sharing.

DTOD

DEFENSE TABLE OF OFFICIAL DISTANCES

FUNCTIONALITY: Official DOD repository for worldwide distance information.
PRIMARY CUSTOMER-BASE: All DOD members can log directly into DTOD.

DTOD is the official source for worldwide distance information used by the Department of Defense. DTOD provides vehicular land distances for all DOD household goods, freight, and PCS/TDY travel needs. It generates point-to-point distances and routes for origin/destination pairs of locations. The DTOD websites distance calculation and mapping functions provide road segment and cumulative distances over the network of truck-usable highways and roads across the globe.

JECD

JOINT EQUIPMENT CHARACTERISTICS DATABASE

FUNCTIONALITY: Repository of standard military vehicles and other outside/overweight transportation equipment characteristics.
PRIMARY CUSTOMER-BASE: DOD-wide.

JECD is the repository for standard transportation characteristics (Dimensions, Weight, and Cube) of military vehicles and other outsized and overweight equipment. The application is the source for all Army Tables of Organization and Equipment (TOE) end-items



ISDDDC

INTEGRATED MISSION SUPPORT FOR SURFACE DEPLOYMENT AND DISTRIBUTION COMMAND

FUNCTIONALITY: Integrated transportation visualization and decision support capability.

PRIMARY CUSTOMER-BASE: SDDC (HQ and Transportation BDE/BN), Shippers, COCOMS (>1,300 user accounts).

The Integrated Mission Support for Surface Deployment and Distribution Command (ISDDDC) Tool is SDDC's repository of integrated surface transportation data, supporting several USTRANSCOM and SDDC business systems with operational information through web services, transactions, and interfaces. ISDDDC provides users detailed and aggregate-level information through powerful ad-hoc queries, business intelligence analytical reporting tools and a mapping capability to enable greater visibility to the warfighter.

PAT

PIPELINE ASSET TOOL

FUNCTIONALITY: Suite of surface transportation business supporting portals

PRIMARY CUSTOMER-BASE: SDDC (HQ and Transportation BDE/BN), Shippers and Commercial Carriers (>3,100 user accounts).

PAT is a suite of business portals accessible by commercial carriers, shippers, and SDDC that supports the SDDC global transportation mission. PAT specifically focuses on automating the requirements of the Universal Services Contract (USC) and related strategic surface transportation contracts. PAT provides the capability to measure carrier performance, capture operational reports outlined in the contracts, certify carrier invoices, and reconcile booking-through-execution and payment processes.

SN

SAFETYNET

FUNCTIONALITY: DOD repository for hazardous materials regulatory guidance.

PRIMARY CUSTOMER-BASE: Transportation community (shippers of hazardous materials).

The SafetyNet (SN) System is a tool supporting the SDDC Safety Office's role as liaison between the DOD and the Department of Transportation (DOT) in matters relating to the transportation of DOD hazardous materials as prescribed in the Defense Transportation Regulation (DTR). DOD authorized users requiring transportation may access SafetyNet to acquire the necessary authorities to meet transportation mission requirements.

TFMS

TRANSPORTATION FINANCIAL MANAGEMENT SYSTEM

FUNCTIONALITY: The accounting system of record for SDDC.

PRIMARY CUSTOMER-BASE: World-wide (DoD Components, Defense Agencies, Federal Agencies, Foreign Governments, Private Sector (1,200+ users)).

SDDC's Transportation Financial Management System is the financial management and reporting solution to manage the Transportation Working Capital Fund (TWCF). TFMS uses the Commercial-Off-The-Shelf Oracle Enterprise Business Suite, Identity and Access Manager, and Oracle Business Intelligence Enterprise Edition. TFMS also supports the execution of contracts with suppliers who facilitate the SDDC mission including ocean carriers, commercial air carriers, railroads, stevedore contractors, and the Global POV Storage contractor. TFMS includes modules configured to perform a wide variety of financial management functions including payroll timekeeping, travel, accounts receivable, accounts payable, purchasing, projects accounting, time and labor, funds allocation, fixed asset accounting, and general ledger accounting.

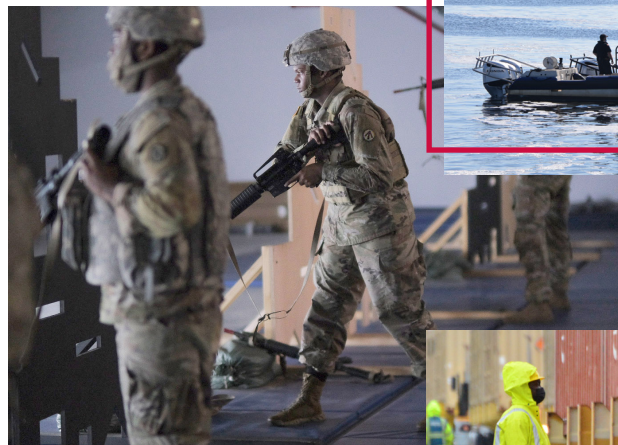
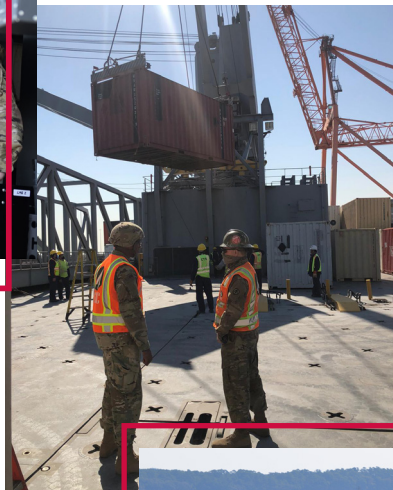
IOCC

INSTALLATION OUTLOADING CAPABILITY COLLECTION

FUNCTIONALITY: Installation capability reporting.

PRIMARY CUSTOMER-BASE: G5 and data provided to JFAST.

IOCC captures capabilities of CONUS and OCONUS military installations to outload and receive materials – rail, motor, and containers. The data captured in IOCC is used to plan strategic deployments at scale.



JCM

JOINT CONTAINER MANAGEMENT

FUNCTIONALITY: Track all DOD-owned and leased containers.

PRIMARY CUSTOMER-BASE: DOD-wide (Biennial Inventory), Commercial Container Leasing Providers.

The JCM system provides a joint, standardized interface supporting life-cycle and operational container management across the DOD for government, leased, and commercial containers in an effort to reduce costs, provide greater visibility, address capability gaps, and improve accountability. JCM captures container data from all COCOMs and Services including feeds to and from other systems. JCM hosts the DOD ISO registry, accounting for all DOD-owned containers, and is used to capture the DOD-wide Biennial Container Inventory. The ordering functions of the Master Lease contract for leasing containers are executed using JCM.

FOLLOW US!



[FACEBOOK.COM/HQSDDC](https://www.facebook.com/HQSDDC)



[TWITTER.COM/HQSDDC](https://twitter.com/HQSDDC)



[LINKEDIN.COM/COMPANY/HQSDDC](https://www.linkedin.com/company/HQSDDC)



[FLICKR.COM/HQSDDCPHOTOS](https://www.flickr.com/photos/HQSDDC)



[YOUTUBE.COM/HQSDDC](https://www.youtube.com/HQSDDC)



[SDDC.ARMY.MIL](https://www.sddc.army.mil)

SURFACE WARRIORS!
